

2020 CATALOG

# CCI<sup>®</sup>

The Leader in Rimfire Ammunition<sup>®</sup>



FEATURING  
**BLAZER**<sup>®</sup>  
AMMUNITION



## TABLE OF CONTENTS

### CCI

Varmint .....	4-9
Small Game.....	10-13
Target & Plinking .....	14-17
Pest Control & Specialty .....	18-19
Primers .....	20-21
Ballistics .....	22-23

### BLAZER

Handgun & Rimfire .....	24-27
-------------------------	-------

## NEW PRODUCTS



### MAXI-MAG® & VNT™ POUR PACKS

Bulk packs have never been as convenient or fun. Page 4.

### MAXI-MAG SEGMENTED HP

There's no escaping this. We've combined the power of the 22 WMR cartridge with the lethality of our exclusive Segmented Hollow Point bullet. Page 5.



### CLEAN-22® SUPPRESSOR

Cut the noise and the fouling with this new load. Page 14.



Since 1951, CCI has shaped the industry and served generations of shooters with the most advanced offerings for plinkers, hunters, competitors and reloaders. While other manufacturers are content to offer a small selection of general purpose loads, we craft ammunition customized to perform to the highest standards of specific disciplines. We carry on that tradition today, expanding our lines with new options that stretch the limits of technology even further.

It's why CCI is now the official ammunition of the USPSA Steel Challenge.

Thank you for shooting CCI.



## MAXI-MAG® & VNT™ POUR PACKS **NEW!**

Got ammo? Now you do. CCI® Pour Packs hold 125 rounds of Maxi-Mag or VNT. The convenient cartons pour easily for high-volume shooting at the range or in the field. When the fun's over, they're easy to reclose until your next shoot. Maxi-Mag JHP ammunition provides the precision and all-around performance for a wide range of shooting and hunting, while VNT's thin jacket and polymer tip offer accuracy and explosive expansion on impact.



### TNT®

- Explosive on impact
- Minimal mid-range rise
- Nearly identical point of aim to V-Max in 17 HMR



### TNT GREEN®

- Lead-free bullet
- Explosive terminal performance
- Match-grade accuracy



VARMINT						
Cartridge/Product Name	Part No.	Caliber	Bullet Style	Wt. (grs)	Muzzle	
17 HMR VNT POUR PACK*	923CC	17 HMR	VNT	17	2650	
22 WMR VNT POUR PACK	929CC	22 WMR	VNT	30	2200	
MAXI-MAG POUR PACK	920CC	22 WMR	JHP	40	1875	
17 HMR TNT GREEN *	951	17 HMR	TNT GREEN HP	16	2500	
17 HMR TNT *	53	17 HMR	JHP	17	2550	
22 MAXI-MAG TNT	63	22 WMR	TNT JHP	30	2200	
22 MAG TNT GREEN	60	22 WMR	TNT GREEN HP	30	2050	

\* To avoid serious injury do not use in semi-automatic firearms without consulting with your firearms manufacturer; use only in modern firearms in good condition marked for 17 HMR cartridges.



# MAXI-MAG SEGMENTED HP 22 WMR **NEW!**



The coating technology that made rimfire clean is now being used to extend the range and power of 22 WMR. New Maxi-Mag Segmented HP uses an exclusive polymer bullet coating to greatly reduce copper and lead fouling in the barrel without leaving a residue. The load's 46-grain Segmented Hollow Point splits into three equal-size pieces on impact, tripling the number of wound channels.

- The industry's only segmenting hollow-point bullet in 22 WMR
- Allows expansion at lower velocities than copper-jacketed bullets
- Segmenting bullets reduces the risk of over penetration on small game targets



## VNT™

- Now available in 22 WMR, 17 Mach 2 and 17 HMR
- Speer VNT bullet design
- 17 HMR is 100 fps faster than comparable loads
- Devastating terminal effect on varmints
- Nickel-plated brass on 17 Mach 2 and 22 WMR



## V-MAX®

- Flat-shooting
- Accurate
- Explosive expansion
- Available in 17 HMR and 22 Win. Magnum



### VARMINT

Cartridge/Product Name	Part No.	Caliber	Bullet Style	Wt. (grs)	Muzzle
MAXI-MAG SEGMENTED HP 22	972CC	22 WMR	POLY-COATED SHP	46	1875
17 HMR VNT *	959CC	17 HMR	VNT	17	2650
17 HMR V-MAX *	49	17 HMR	POLY-TIP V-MAX	17	2550
17 MACH 2 VNT*	948CC	17 MACH 2	VNT	17	2010
22 WMR VNT	969CC	22 WMR	VNT	30	2200
22 MAG V-MAX	73	22 WMR	POLY-TIP V-MAX	30	2200

\* To avoid serious injury do not use in semi-automatic firearms without consulting with your firearms manufacturer; use only in modern firearms in good condition marked for 17 HMR cartridges.

V-Max is a registered trademark of Hornady®.

To avoid serious injury from a ruptured cartridge, 17 Mach 2 ammunition should only be used in firearms with components specifically designed to safely fire 17 Mach 2 ammunition, including the firearms action components (bolt/firing mechanism). Do not use this ammunition in firearms that have been modified unless ALL the action components have been specifically designed and verified by the firearm manufacturer as intended for 17 Mach 2.

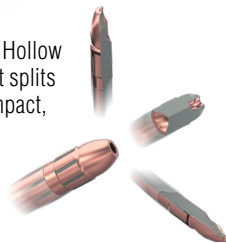


## MINI-MAG® SEGMENTED HOLLOW POINT

Mini-Mag remains one of CCI's most popular 22 LR loads, offering unbeatable accuracy, high velocities, flat trajectories and superior reliability. Mini-Mag Segmented Hollow Point combines all of what made the original a favorite with a bullet engineered to split into three equal-size parts on impact, creating three distinct wound channels that quickly take down varmints. The ammunition also features CCI's extremely reliable priming and specialized powders for clean, consistent ignition.

- Bullet splits into three equal-size parts on impact
- Flat shooting and highly accurate to maximize effective range
- Reliable feeding
- Clean-burning powder causes significantly less barrel fouling

Mini-Mag Segmented Hollow Point uses a bullet that splits into three pieces on impact, tripling the lethality.



### MINI-MAG

- Reliable cycling
- Extreme accuracy
- High velocities and flat trajectories



VARMINT					
Cartridge/Product Name	Part No.	Caliber	Bullet Style	Wt. (grs)	Muzzle
MINI-MAG SHP	36CC	22 LONG RIFLE	SHP	40	1235
SUB-SONIC SHP	74	22 LONG RIFLE	SHP	40	1050
MINI-MAG HP	31	22 LONG RIFLE	CPHP	36	1260





# STINGER®

Stinger 22 LR loads produce a muzzle velocity of 1,640 fps and are loaded within industry standard pressures. They shoot flat, anchor varmints fast and provide reliable performance thanks to CCI priming and brass.

- Hyper-velocity
- Loaded within industry standard pressures
- Anchors varmints fast



# 22 SHORT HOLLOW POINT

- A CCI exclusive
- Great stopping power
- Reliable expansion



VARMINT					
Cartridge/Product Name	Part No.	Caliber	Bullet Style	Wt. (grs)	Muzzle
SHORT HP	28	22 SHORT	CPHP	27	1105
STINGER **	50	22 LONG RIFLE	CPHP	32	1640

\*\* Use only in firearms having standard ANSI sporting barrel/chamber dimensions.



## 22PLINKSTER'S FAVORITE

CCI Stinger isn't just a great load for pinning down varmints. It's also one of the top choices of YouTube shooting sensation 22plinkster. He relies on the accuracy and consistency of Stinger and other CCI loads to pull off the jaw-dropping trick shots that have to date attracted more than 550,000 subscribers and almost 90 million views.

[youtube.com/user/22plinkster](https://youtube.com/user/22plinkster)



## A17®

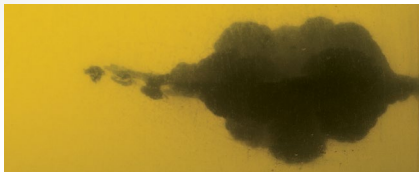
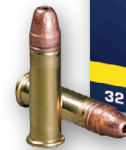
Get magnum rimfire performance in a semi-automatic rifle with A17 Varmint Tip ammunition. CCI engineers literally built this 17 HMR load around the A17 rifle from Savage®. The round is optimized for feeding and function in the semi-automatic rifle, and produces muzzle velocities 100 fps faster than other 17 HMR loads with the same bullet weight. Its Varmint Tip bullet ensures explosive expansion and quick, clean kills.

- Optimized for the Savage A17 semi-automatic and can be fired through bolt-action 17 HMR rifles
- 100 fps faster than other 17 HMR loads of the same weight
- Varmint Tip bullet provides rapid expansion



## SEGMENTED HOLLOW POINT

- Lethal terminal effect
- Bullet breaks into three parts on impact
- Each segment creates its own wound channel



A17 17 HMR (949CC) shot into bare ballistics gel at 100 yards; 6 inches penetration.

VARMINT					
Cartridge/Product Name	Part No.	Caliber	Bullet Style	Wt. (grs)	Muzzle
A17 *††	949CC	17 HMR	VARMINT TIP	17	2650
A17 *	950CC	17 HMR	VARMINT TIP	17	2650
SEGMENTED HP **	64	22 LONG RIFLE	SHP	32	1640

\* To avoid serious injury do not use in semi-automatic firearms without consulting with your firearms manufacturer; use only in modern firearms in good condition marked for 17 HMR cartridges. \*\* Use only in firearms having standard ANSI sporting barrel/chamber dimensions. †† Bulk pack.

A17 is registered trademark of Savage Arms, Inc., licensed to CCI for use.







## MEATEATER SERIES NEW!

MeatEater's Steven Rinella relies on rimfire ammunition to put small game on his plate. We've partnered with this conservationist, chef, author and hunter on this exclusive new line of ammunition, featuring our proven Mini-Mag® and Maxi-Mag® loads. Each box features one of Rinella's own mouth-watering wild game recipes.

- Accurate, hard-hitting performance trusted by MeatEater
- Clean-burning propellants
- Reliable cycling
- Surefire CCI priming



### MAXI-MAG®

- Clean-burning propellants
- Maximum velocities
- Maximum energy transfer on impact



#### VARMINT

Cartridge/Product Name	Part No.	Caliber	Bullet Style	Wt. (grs)	Muzzle
MEATEATER MINI-MAG HP ††	962ME	22 LR	CPHP	36	1260
MEATEATER MAXI-MAG HP ††	958ME	22 WMR	JHP	40	1875
MAXI-MAG HP+V	59	22 WMR	JHP	30	2200
MAXI-MAG HP	24	22 WMR	JHP	40	1875

†† Bulk pack.





## MEAT EATER

### COPPER-22™ NEW!

The choice of MeatEater's Steven Rinella. Copper-22's projectile is constructed from a unique mix of copper particles and polymer compressed into a potent 21-grain hollow-point bullet. Combined with CCI's reliable priming and propellant, Copper-22 loads achieve a muzzle velocity of 1,850 fps and provide superb accuracy.

- Non-lead bullet suited for small game hunting, plinking and target shooting
- 21-grain hollow-point bullet
- Compressed copper-polymer construction
- 1,850 fps muzzle velocity
- Excellent accuracy

### SUB-SONIC HP

- Low noise
- Bullet expands without fragmenting
- Great performance on small game



### SMALL GAME BULLET

- Better stopping power than round-nose bullets
- Flat nose creates cylindrical wound channel
- Less meat spoilage



SMALL GAME						
Cartridge/Product Name	Part No.	Caliber	Bullet Style	Wt. (grs)	Muzzle	
COPPER-22**	925CC	22 LR	COPPER HP	21	1850	
SUB-SONIC HP	56	22 LONG RIFLE	LHP	40	1050	
SGB (SMALL GAME BULLET)	58	22 LONG RIFLE	LFN	40	1235	

\*\* Use only in firearms having standard ANSI sporting barrel/chamber dimensions.





## QUIET-22™ SEGMENTED HP

Quiet-22 Segmented HP generates 75 percent less perceived noise than a standard velocity 22 Long Rifle round. However, its Segmented HP bullet splits in three on impact, with each section creating its own distinct wound channel to bring down small game fast.

- 40-grain Segmented HP bullet breaks into three pieces on impact
- 75 percent less perceived noise than standard 22 Long Rifle
- No hearing protection needed when fired in locked-breech firearms
- Standard 22 Long Rifle case
- Excellent accuracy



## SUPPRESSOR

- Subsonic velocity further minimizes noise through suppressed firearms
- Hollow-point bullet consistently expands at low velocities
- Reliable function in suppressed semi-automatic firearms
- Clean-burning powders

### SMALL GAME

Cartridge/Product Name	Part No.	Caliber	Bullet Style	Wt. (grs)	Muzzle
QUIET-22 SEGMENTED HP *	970	22 LONG RIFLE	CPRN	40	710
SUPPRESSOR	957	22 LONG RIFLE	LHP	45	970

\* These cartridges may be used in semi-automatic firearms, however manual cycling of the action may be required.





## VELOCITOR® HP

Shoot flatter and hit distant small game harder with CCI Velocitor HP loads. They're 200 fps faster than 22 Long Rifle high-velocity loads of the same bullet weight and provide excellent weight retention, downrange energy and penetration.

- 200 fps faster than 22 Long Rifle high-velocity loads of the same bullet weight
- Excellent weight retention
- Impressive downrange energy
- Deep penetration



## SMALL GAME FMJ

- Punches clean holes
- 17 HMR option is a CCI® exclusive
- Very accurate
- No expansion



### SMALL GAME

Cartridge/Product Name	Part No.	Caliber	Bullet Style	Wt. (grs)	Muzzle
VELOCITOR HP	47	22 LONG RIFLE	CPHP	40	1435
SMALL GAME 17 HMR *	55	17 HMR	FMJ	20	2375

\* To avoid serious injury do not use in semi-automatic firearms without consulting with your firearms manufacturer; use only in modern firearms in good condition marked for 17 HMR cartridges.



## A22 MAGNUM



A22 Magnum gets the most performance possible from the venerable 22 WMR cartridge. The light 35-grain bullet boosts speed, while its GamePoint® design expands like a big game bullet on impact, maximizing terminal effects. CCI has enhanced the round even further by building it around the A22 Magnum semi-automatic rifle from Savage®. The rifle allows for the ultimate 22 WMR reliability and accuracy. A22 ammunition also provides precise, consistent performance with other rifles chambered in 22 WMR.

- Built around the Savage A22 Magnum semi-automatic rifle
- GamePoint bullet expands reliably for maximum terminal effect
- 35-grain bullet weight yields a 2,100 fps muzzle velocity
- Reliable cycling and excellent accuracy
- CCI brass and priming

### GAMEPOINT®

- Dimple-Tip expands like a big game bullet
- Minimal meat and hide damage
- Accurate, powerful



#### SMALL GAME

Cartridge/Product Name	Part No.	Caliber	Bullet Style	Wt. (grs)	Muzzle
A22 MAGNUM	963CC	22 WMR	JSP	35	2100
17 HMR GAMEPOINT *	52	17 HMR	JSP	20	2375
22 WMR GAMEPOINT	22	22 WMR	JSP	40	1875

*\* To avoid serious injury do not use in semi-automatic firearms without consulting with your firearms manufacturer; use only in modern firearms in good condition marked for 17 HMR cartridges.*





## CLEAN-22® SUPPRESSOR NEW!

Now silence isn't just golden—it's clean. New CCI® Clean-22 Suppressor 22 LR uses an advanced polymer bullet coating to reduce lead fouling inside a suppressor 60 percent. The exclusive feature allows much easier suppressor cleaning and maintenance, as well as excellent accuracy. With dependable CCI priming and consistent propellant, the loads cycle reliably through any suppressed firearm.

- Polymer bullet coating reduces lead fouling in suppressors 60 percent
- Ballistically optimized 45-grain lead round nose bullet
- Reliable function in semi-automatic firearms
- 1,000 fps muzzle velocity

### 22 LONG

- A CCI exclusive
- Only 22 Long load on the market
- Extreme reliability and accuracy



### MAXI-MAG® TMJ®

- Consistent performance for plinking
- Utilizes surefire priming technology
- Jacket seamlessly encases lead core for accuracy



### QUIET-22™ SEMI-AUTO

- Flawless cycling through semi-automatic rifles
- Dramatic reduction in perceived noise
- Excellent accuracy
- Low velocity



#### TARGET/COMPETITION/PLINKING

Cartridge/Product Name	Part No.	Caliber	Bullet Style	Wt. (grs)	Muzzle
CLEAN-22™ SUPPRESSOR	980CC	22 LONG RIFLE	BLACK RN	45	1000
QUIET-22™ SEMI-AUTO	975CC	22 LONG RIFLE	RN	45	835
MAXI-MAG TMJ	23	22 WMR	TMJ	40	1875
LONG	29	22 LONG	CPRN	29	1215





Clean-22 is the official ammunition of the USPSA Steel Challenge



## CLEAN-22

The future of rimfire is here. Clean-22 uses an exclusive polymer bullet coating to greatly reduce copper and lead fouling in the barrel—without leaving a residue.

- Polymer bullet coating greatly reduces lead fouling in the barrel without leaving residue
- Cuts lead buildup in suppressors 60 to 80 percent
- Optimized bullet geometry for improved accuracy
- Available in Sub-Sonic and High-Velocity
- Clean-22 Pink's 400-round bottle is ideal for volume shooters, and a portion of the proceeds go to fight breast cancer



## QUIET-22

- 75 percent less perceived noise than standard velocity 22 Long Rifle loads
- Excellent accuracy
- Low velocity



## MINI-MAG®

- Original CCI 22 Long Rifle offering, and still the most popular
- Reliable feeding
- Clean-burning powder minimizes barrel fouling



TARGET/COMPETITION/PLINKING						
Cartridge/Product Name	Part No.	Caliber	Bullet Style	Wt. (grs)	Muzzle	
CLEAN-22 SUBSONIC	934CC	22 LONG RIFLE	BLUE RN	40	1070	
CLEAN-22 HIGH VELOCITY	944CC	22 LONG RIFLE	RED RN	40	1235	
MINI-MAG	30	22 LONG RIFLE	CPRN	40	1235	
QUIET-22 *	960	22 LONG RIFLE	LRN	40	710	

\* These cartridges may be used in semi-automatic firearms, however manual cycling of the action may be required.



## GREEN TAG®

When a competition is on the line, settle for nothing less than the ultimate rimfire accuracy. CCI Green Tag is suitable for both rifles and pistols, and is designed exclusively for competition.

- Ultimate in accuracy
- Suitable for rifles or pistols
- Designed exclusively for competition



## 22 SHORT

- High velocity
- Copper-plated for clean bores
- Great accuracy, performance

## STANDARD VELOCITY

- Affordable practice round
- Same velocity as Green Tag
- Consistent performance



### TARGET/COMPETITION/PLINKING

Cartridge/Product Name	Part No.	Caliber	Bullet Style	Wt. (grs)	Muzzle
GREEN TAG	33	22 LONG RIFLE	LRN	40	1070
STANDARD VELOCITY	32	22 LONG RIFLE	LRN	40	1070
STANDARD VELOCITY*	35	22 LONG RIFLE	LRN	40	1070
22 SHORT	27	22 SHORT	CPRN	29	1080

\* 50-count box







## PISTOL MATCH

Get unmatched function in handguns with Pistol Match ammunition. Its precision components and tight tolerances make it an excellent choice for competitive handgun shooting.

- Proven accuracy in handguns
- Precision components
- Improved functionality across different handguns



## SHORT TARGET

- Accurate and reliable to meet competition demands
- Specialized for IRF pistol competition
- Reliable cycling with minimal recoil



## 22 AR TACTICAL

- Optimized for cycling and accuracy in rimfire MSRs
- 1.5-inch groups at 100 yards in factory testing
- Copper-plated round-nose bullet



### TARGET/COMPETITION/PLINKING

Cartridge/Product Name	Part No.	Caliber	Bullet Style	Wt. (grs)	Muzzle
SHORT TARGET	37	22 SHORT	LRN	29	830
PISTOL MATCH	51	22 LONG RIFLE	LRN	40	1070
AR TACTICAL † †	956	22 LONG RIFLE	CPRN	40	1200

† † Bulk pack.



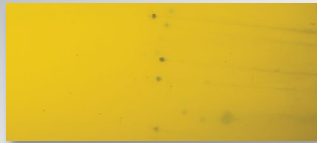


## BIG 4™

Centerfire handgun shotshells have proven themselves as highly practical options for close-range pests. CCI Big 4 loads extend the range and capabilities of these downsized shotshells, thanks to a payload of No. 4 shot. The resulting energy and patterns enable Big 4 loads to take down larger pests at longer distances, making them even more useful.

### CENTERFIRE HANDGUN SHOTSHELL

- Great for close-range pest control
- Packed in reusable boxes of 10 shotshells
- Widely available in a variety of calibers



Big 4 38 Special/357 Magnum (3714CC) fired into bare ballistic gel at 10 feet; 6 ¾ inches penetration.



PEST CONTROL (CENTERFIRE SHOTSHELL)								PEST CONTROL (CENTERFIRE SHOTSHELL)							
Caliber	Part No.	Shot Size	Approximate Payload, Wt. (grs)	4" Barrel	5" Barrel	6" Barrel	Box Ct.	Caliber	Part No.	Shot Size	Approximate Payload, Wt. (grs)	4" Barrel	5" Barrel	6" Barrel	Box Ct.
44 MAG/SPL **	3744	#9	140	—	—	1000	10	9MM LUGER *	3790	#12	53	1450	—	—	10
BIG 4 - 44 MAG **	3718CC	#4	110	1000	—	—	10	BIG 4 - 9MM LUGER *	3712CC	#4	45	1000	—	—	10
45 AUTO ***	3745	#9	120	—	1100	—	10	38 SPL/357 MAG **	3738	#9	100	—	—	1000	10
45 COLT **	3746	#9	150	—	—	1000	10	BIG 4 - 38 SPL/357 MAG **	3714CC	#4	84	1000	—	—	10
BIG 4 - 45 COLT **	3722CC	#4	140	—	—	800	10	40 S&W ***	3740	#9	88	1250	—	—	10

*DO NOT USE SHOTSHELLS IN FIREARMS WITH PORTED BARRELS OR PORTED RECOIL COMPENSATORS. DO NOT RELOAD THESE CARTRIDGE CASES. These cases are marked NR (Not Reloadable). Rupture of reloaded cases can cause severe injury. Intended for short-range pest control; not recommended for self-defense. Cylinder lock up may occur in lightweight revolvers due to capsule movement resulting from recoil inertia. \* These cartridges are loaded with a lighter projectile than conventional 9mm Luger ammunition for use in pistols and revolvers. They may not function reliably in all models of firearms. \*\* May not function properly in rifles. \*\*\* DO NOT USE IN REVOLVERS – cylinder lock-up may occur.*





## RIMFIRE SHOTSHELL

- Consistent patterns
- Easier hits on pests
- Only 22 WMR shotshell load on the market



## NOISE BLANKS

- Great for training
- Clean-burning propellant
- Work in any firearm chambered for 22 Short, Long or Long Rifle



## CB

- More effective at longer ranges on pests
- Accurate
- Great plinking loads



## 22 WRF JACKETED HOLLOW-POINT

- 19th century favorite with 21st century technology
- Only 22 WRF JHP in the industry
- Copper composition and special base are ideal for old barrels



### PEST CONTROL

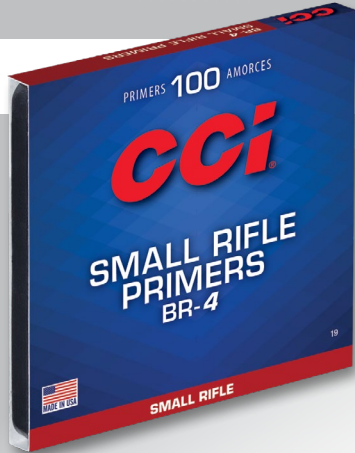
Cartridge/Product Name	Part No.	Caliber	Shot Size	Approximate Payload, Wt. (grs)	Muzzle
22 LR SHOTSHELL	39	22 LONG RIFLE	#12	31	1000
22 WMR SHOTSHELL	25	22 WMR	#12	52	1000

### SPECIALTY

Cartridge/Product Name	Part No.	Caliber	Bullet Style	Wt. (grs)	Muzzle
CB SHORT	26	22 SHORT	LRN	29	710
CB LONG	38	22 LONG	LRN	29	710
NOISE BLANK	44	BLANK	—	—	—
22 WRF †	69	22 WRF	JHP	45	1300

DO NOT USE SHOTSHELLS IN FIREARMS WITH PORTED BARRELS OR PORTED RECOIL COMPENSATORS. DO NOT RELOAD THESE CARTRIDGE CASES. Rupture of reloaded cases can cause severe injury. Intended for short-range pest control; not recommended for self-defense. † Not for revolvers. Most 22 WRF revolvers have undersized bores that cannot use a jacketed bullet. Performance data derived from industry test barrels; provided for reference. Velocities from production firearms may vary. Specifications subject to change without notice.





## PRIMERS

High-performance handloads start with CCI primers. Our designs are sensitive and proven to offer extremely consistent, reliable performance for every application.

### STANDARD RIFLE/ PISTOL PRIMERS

- Clean-burning
- Mil-spec offerings available
- Unmatched reliability



### BENCH REST RIFLE PRIMERS

- Built specifically for bench rest shooters
- Engineered to provide precision ignition in tough competition
- Assembled with extra care for superior consistency and accuracy

#### PACKAGING USAGE COLOR KEY

LARGE RIFLE	MAGNUM LARGE RIFLE
LARGE PISTOL	MAGNUM LARGE PISTOL
SMALL RIFLE	MAGNUM SMALL RIFLE
SMALL PISTOL	MAGNUM SMALL PISTOL
SHOTSHELL	MAGNUM SHOTSHELL
MUZZLE LOADING	MAGNUM MUZZLE LOADING

### PERCUSSION CAPS

- Non-corrosive, non-mercuric priming compounds
- Choice of styles
- Assembled with soft, ribbed copper cups



### 209 IN-LINE MUZZLELOADING PRIMERS

- Optimized for muzzleloading
- Reduce fouling
- Formulated to ignite in humid conditions



## MAGNUM RIFLE/PISTOL PRIMERS

- Provide extra heat and ignition power
- 20 percent hotter flame to light propellants in the toughest hunting conditions
- No loss in sensitivity



## SHOTSHELL PRIMERS

- 209 primer designed for standard field and target loads
- Reliable, clean-burning
- Fit all modern shotshell cases with 209 primer pocket
- 209M is a true magnum shotshell primer for heavy waterfowl and turkey loads



## FOUR-WING MUSKET CAPS

- Tough four-wing design
- Lighter explosive charge
- Designed especially for reenactment



## PRIMERS IN APS® STRIPS

- Available for most popular primers
- Speeds up reloading
- Protects primers until used



### CCI® PRIMERS

Primer	Product Type	Part # Boxed	Part# in APS Strips	APS Strip Color Code
Shotshell	209	8	—	—
	209M	9	—	—
	400	13	80	yellow
Small Rifle	450 Mag.	17	81	blue
	No. 41*/5.56mm	1	—	—
	BR4	19	82	black
Large Rifle	200	11	86	yellow
	250 Mag.	15	87	blue
	No. 34*/7.62mm	2	—	—
Small Pistol	BR2	10	88	black
	500	14	78	white
	550 Mag.	18	79	red
Large Pistol	300	12	84	white
	350 Mag.	16	85	red
Muzzleloading	209	307	—	—
	10	309	—	—
Percussion Caps	11	311	—	—
	11 Mag.	310	—	—
	Four Wing Musket Caps	301	—	—
50-caliber BMG	35*	320	—	—

All CCI primers and percussion caps are non-corrosive and non-mercuric. \*Mil-spec offering.

## ERIC GRAUFFEL WORLD IPSC CHAMPION

CCI's competitive shooting expert Eric Grauffel has an unprecedented winning streak. The French shooter has won more than 180 President Medals and has earned the title of World Champion of the International Practical Shooting Confederation (IPSC) seven consecutive years. For his competitive shooting, Grauffel uses only CCI small pistol primers in his hand-loaded ammunition. With CCI primers he gets the most reliability, efficiency and accuracy.



Cartridge/Product Name	Part Number	Caliber	Bullet Style	Wt. (grs.)	Velocity, ft/sec			Est. Handgun
					Muzzle	50 yds	100 yds	
<b>VARMINT</b>								
MAXI-MAG® SEGMENTED HP 22 WMR <b>NEW</b>	972CC	22 WMR	POLY-COATED SHP	46	1875	1623	1430	1331
VNT™ *	959CC	17 HMR	VNT	17	2650	2353	2070	2140
VNT <sup>o</sup>	948CC	17 MACH 2	VNT	17	2010	1724	1471	1710
VNT	969CC	22 WMR	VNT	30	2200	1866	1571	1610
22 WMR VNT POUR PACK †† <b>NEW</b>	929CC	22 WMR	VNT	30	2200	1866	1571	1610
17 HMR VNT™ POUR PACK* †† <b>NEW</b>	923CC	17 HMR	VNT	17	2650	2353	2070	2140
A17 * ††	949CC	17 HMR	VARMINT TIP	17	2650	2353	2070	2140
A17 *	950CC	17 HMR	VARMINT TIP	17	2650	2353	2070	2140
17 HMR V-MAX *	49	17 HMR	POLY-TIP V-MAX	17	2550	2220	1915	2040
17 HMR TNT® *	53	17 HMR	JHP	17	2550	2132	1757	2040
17 HMR TNT GREEN® *	951	17 HMR	TNT GREEN HP	16	2500	2043	1642	1955
SHORT HP	28	22 SHORT	CPHP	27	1105	961	868	1070
STINGER® **	50	22 LONG RIFLE	CPHP	32	1640	1292	1066	1395
SEGMENTED HP **	64	22 LONG RIFLE	SHP	32	1640	1292	1066	1395
MINI-MAG® HP	31	22 LONG RIFLE	CPHP	36	1260	1104	1003	1085
MINI-MAG® SEGMENTED HP	36CC	22 LONG RIFLE	SHP	40	1235	1092	998	1060
SIGNATURE MINI-MAG® †† <b>NEW</b>	962ME	22 LONG RIFLE	CPHP	36	1260	1104	1003	1085
SEGMENTED HP SUB-SONIC	74	22 LONG RIFLE	SHP	40	1050	963	897	940
MAXI MAG® HP +V	59	22 WMR	JHP	30	2200	1749	1375	1610
22 MAXI MAG® TNT®	63	22 WMR	TNT JHP	30	2200	1768	1405	1610
MAXI-MAG® POUR PACK †† <b>NEW</b>	920CC	22 WMR	JHP	16	1875	1574	1319	1425
22 MAG V-MAX	73	22 WMR	POLY-TIP V-MAX	30	2200	1866	1571	1610
22 MAG TNT GREEN®	60	22 WMR	TNT GREEN HP	30	2050	1648	1317	1475
MAXI MAG® HP	24	22 WMR	JHP	40	1875	1574	1319	1425
SIGNATURE MAXI MAG® †† <b>NEW</b>	958ME	22 WMR	JHP	40	1875	1574	1319	1425
<b>SMALL GAME</b>								
17 HMR *	55	17 HMR	FMJ	20	2375	2063	1776	1830
17 HMR GAMEPOINT® *	52	17 HMR	JSP	20	2375	2051	1754	1830
COPPER-22™ *** <b>NEW</b>	925CC	22 LONG RIFLE	COPPER HP	21	1850	1242	959	1540
VELOCITOR®	47	22 LONG RIFLE	CPHP	40	1435	1230	1084	1130
SGB (SMALL GAME BULLET)	58	22 LONG RIFLE	LFN	40	1235	1088	992	1060
SUB-SONIC HP	56	22 LONG RIFLE	LHP	40	1050	963	897	940
QUIET-22™ SEGMENTED HP ***	970	22 LONG RIFLE	SHP	40	710	674	640	590
SUPPRESSOR	957	22 LONG RIFLE	LHP	45	970	906	852	850
22 MAG GAMEPOINT®	22	22 WMR	JSP	40	1875	1614	1385	1425
A22 MAGNUM GAMEPOINT® ††	963CC	22 WMR	JSP	35	2100	1816	1561	1596
<b>COMPETITION / TARGET / PLINKING</b>								
QUIET-22™ SEMI AUTO	975CC	22 LONG RIFLE	SOFT POINT	45	835	795	755	805
CLEAN-22™	934CC	22 LONG RIFLE	SOFT POINT	40	1070	977	908	940
CLEAN-22	944CC	22 LONG RIFLE	SOFT POINT	40	1235	1092	998	1060
CLEAN-22™ SUPPRESSOR <b>NEW</b>	980CC	22 LONG RIFLE	BLACK RN	45	1000	940	885	840
SHORT TARGET	37	22 SHORT	LRN	29	830	763	704	790
GREEN TAG®	33	22 LONG RIFLE	LRN	40	1070	977	908	940
PISTOL MATCH	51	22 LONG RIFLE	LRN	40	1070	977	908	940
SHORT	27	22 SHORT	CPRN	29	1080	946	857	1050
LONG	29	22 LONG	CPRN	29	1215	1019	908	1090
QUIET-22™ ***	960	22 LONG RIFLE	LRN	40	710	674	640	590
STANDARD VELOCITY	32	22 LONG RIFLE	LRN	40	1070	977	908	940
STANDARD VELOCITY	35	22 LONG RIFLE	LRN	40	1070	977	908	940
AR TACTICAL ††	956	22 LONG RIFLE	CPRN	40	1200	1056	964	1025
MINI-MAG®	30	22 LONG RIFLE	CPRN	40	1235	1092	998	1060
MAXI-MAG®	23	22 WMR	TMJ	40	1875	1603	1366	1425
<b>PEST CONTROL</b>								
22 LR SHOTSHELL	39	22 LONG RIFLE	#12 SHOT	31	1000	—	—	—
22 WMR SHOTSHELL	25	22 WMR	#12 SHOT	52	1000	—	—	—
<b>LOW NOISE / TRAINING / SPECIALTY</b>								
CB SHORT	26	22 SHORT	LRN	29	710	656	607	706
CB LONG	38	22 LONG	LRN	29	710	656	607	706
22 WRF †	69	22 WRF	JHP	45	1300	1125	1013	NR†
NOISE BLANK	44	BLANK	—	—	—	—	—	—

Muzzle	Energy, ft-lb			Trajectory <sup>§</sup>			Box Ct.	Special Features
	50 yds	100 yds	25 yds	50 yds	75 yds	100 yds		
359	269	201	0.1	0.9	0.8	⊕	50	First 22 WMR Bullet to Split in Three Parts on Impact
269	209	162	-0.6	0.0	0.2	⊕	200	Explosive and 100 fps Faster than Comparable 17 HMR
152	112	82	-0.1	0.7	0.8	⊕	50	Explosive Expansion and Superb Long-Range Accuracy
322	232	164	-0.2	0.5	0.6	⊕	50	Explosive Expansion and Superb Long-Range Accuracy
322	232	164	-0.2	0.5	0.6	⊕	125	Bulk Carton; Explosive Expansion and Superb Long-Range Accuracy
269	209	162	-0.6	0.0	0.2	⊕	125	Bulk Carton; Explosive Expansion and Superb Long-Range Accuracy
269	209	162	-0.6	0.0	0.2	⊕	200	Fastest 17-Grain 17 HMR on the Market
269	209	162	-0.6	0.0	0.2	⊕	50	Fastest 17-Grain 17 HMR on the Market
245	186	138	-0.5	0.1	0.3	⊕	50	Deadly on Varmints
245	172	116	-0.4	0.2	0.4	⊕	50	Explosive on Varmints
222	148	96	-0.5	0.1	⊕	-0.6	50	Lead-Free Bullet, Explosive on Varmints
73	55	45	0.3	⊕	-2.6	-7.9	100	Fastest 22 Short, Only Short HP
191	119	81	0.1	0.7	⊕	-2.3	50	The Hypervelocity Leader for More than 30 Years
191	119	81	0.1	0.7	⊕	-2.3	50	Unique Fragmentation Design
127	97	80	0.6	1.2	⊕	-3.2	100	The Leading High-Velocity 22 Long Rifle HP
135	106	88	0.7	1.3	⊕	-3.3	100	Bullet Splits in Three Parts on Impact
127	97	80	0.6	1.2	⊕	-3.2	300	The Leading High-Velocity 22 Long Rifle HP
98	82	72	1.2	1.8	⊕	-4.3	50	Unique Fragmented Design, Sub-Sonic
322	204	126	-0.1	0.7	0.8	⊕	50	Highest Velocity 22 Win. Magnum
322	208	131	-0.1	0.7	0.8	⊕	50	Highest Velocity Win. Magnum, Explosive on Varmints
312	220	155	0.1	1.0	1.1	⊕	125	Bulk Carton; High Velocity, Controlled Expansion
322	232	164	-0.2	0.5	0.6	⊕	50	Superior Accuracy, Explosive on Varmints
280	181	116	0.1	0.9	1.0	⊕	50	Lead-Free Bullet, Explosive on Varmints
312	220	155	0.1	1.0	1.1	⊕	50	High Velocity, Controlled Expansion
312	220	155	0.1	1.0	1.1	⊕	200	High Velocity, Controlled Expansion
250	189	140	-0.4	0.3	0.4	⊕	50	No Expansion/Reduced Meat Damage
250	187	137	-0.4	0.3	0.5	⊕	50	Controlled Expansion/Deep Penetration
159	72	43	-0.3	⊕	-1.1	-4.2	50	Lead-Free Bullet, Ideal for Small Game and Targets
183	134	104	0.3	0.9	⊕	-2.5	50	Fastest 40 grain 22 Long Rifle
135	105	87	0.7	1.3	⊕	-3.3	50	Flat Nose for Reduced Meat Damage
98	82	72	1.2	1.8	⊕	-4.3	100	Quiet/Hollow-Point is Engineered to Work at Low Speed
45	40	36	1.5	⊕	-6.4	-17.8	50	Generates 75 Percent Less Perceived Noise than Standard 22 LR
94	82	73	0.5	⊕	-3.1	-9.1	50	Optimized for use with Suppressed Firearms
312	231	170	0.1	0.9	0.9	⊕	50	Controlled Expansion/Deep Penetration
342	256	189	-0.5	⊕	-0.2	-1.2	50	Controlled Expansion/Deep Penetration
70	63	57	0.9	⊕	-4.3	-12.2	50	Low Noise and Functions In Semi-Autos
102	85	73	0.3	⊕	-2.6	-7.6	100	Sub-Sonic Performance with Less Lead Fouling
135	106	88	0.7	1.3	⊕	-3.3	100	High Velocity Function and Reliability with Less Lead Fouling
100	88	83	0.4	⊕	-2.9	-8.4	200	Quiet and Clean, with Less Fouling in Suppressors
44	37	32	1.0	⊕	-4.7	-13.5	100	Precision Ammunition for International Rapid Fire
102	85	73	0.3	⊕	-2.6	-7.6	100	Precision Specs for Accuracy, Sub-Sonic
102	85	73	0.3	⊕	-2.6	-7.6	50	Precision Specs for Accuracy, Sub-Sonic
75	58	47	0.3	⊕	-2.7	-8.1	100	Copper-Plated for Clean Bores
95	67	53	0.1	⊕	-2.2	-6.8	100	Only Classic 22 Long
45	40	36	1.5	⊕	-6.4	-17.8	50	Reliable cycling in semi-automatic firearms with 16- to 20-inch barrels
102	85	73	0.3	⊕	-2.6	-7.6	100	Inexpensive Practice with Same Ballistics as Green Tag®
102	85	73	0.3	⊕	-2.6	-7.6	50	Inexpensive Practice with Same Ballistics as Green Tag®
128	99	82	0.1	⊕	-2.1	-6.0	300	Optimized for Reliable Function in AR-22 Platforms
135	106	88	0.7	1.3	⊕	-3.3	100	Leading High-Velocity 22 Long Rifle
312	228	166	0.1	0.9	1.0	⊕	50	Solid Target Performance
—	—	—	—	—	—	—	20	Easy Pest Control
—	—	—	—	—	—	—	20	Short-Range Pest Control
32	28	24	1.6	⊕	-6.7	-18.8	100	Sub-Sonic Pest Control
32	28	24	1.6	⊕	-6.7	-18.8	100	Sub-Sonic Pest Control
169	126	103	0.6	1.1	⊕	-3.1	50	A Venerable Classic
—	—	—	—	—	—	—	100	Great for Training Dogs

CB = "conical ball" reduced power/noise; FP = flat point; CP = copper-plated; L = lead; J = jacketed; HP = hollow-point; RF = rimfire; RN = round nose; SHP = segmented hollow-point; SP = soft-point; TMJ = encapsulated full metal jacket; T = not for revolvers. Most 22 WMR revolvers have unlined bores that cannot use a jacketed bullet. Performance data derived from industry test barrels; provided for reference. Velocities from production firearms may vary. Specifications subject to change without notice. ††—Bulk pack. § Trajectory—bullet path based on 1.5 inches sight height. \* Do not use 17 HMR ammunition in semi-automatic firearms without first contacting your gun manufacturer. \*\* Use only in firearms having standard ANSI sporting barrel/chamber dimensions. \*\*\* These cartridges may be used in semi-automatic firearms, however manual cycling of the action may be required. ° To avoid serious injury from a ruptured cartridge, 17 Mach 2 ammunition should only be used in firearms with components specifically designed to safely fire 17 Mach 2 ammunition, including the firearms action components (bolt/firing mechanism). Do not use this ammunition in firearms that have been modified unless ALL the action components have been specifically designed and verified by the firearm manufacturer as intended for 17 Mach 2.

## NEW PRODUCTS

### BLAZER BRASS 10MM AUTO

#### FULL-POWER PRACTICE

New Blazer® Brass 10mm Auto pushes its 180-grain FMJ bullet 1200 fps, for accurate, realistic training. The loads use reliable brass cases and non-corrosive, non-mercuric CCI® primers for clean, reliable ignition and consistent ballistics.

- New 10mm Auto option
- Reloadable brass cases
- Reliable cycling
- FMJ bullet provides consistent accuracy for the range
- CCI primer



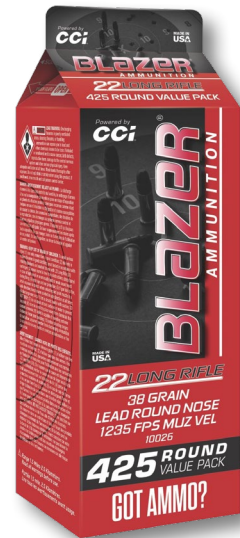
Caliber	Part #	Bullet		Test Barrel Length (inches)	Muzzle	Velocity, ft/sec			Energy, ft-lbs			Trajectory (inches)		
		Wt, (grs)	Type			50 yds	100 yds	Muzzle	50 yds	100 yds	25 yds	50 yds	75 yds	100 yds
10mm Auto	5221	180	FMJ	5	1200	1095	1019	575	479	415	0	-0.8	-3.3	-7.9

### POUR PACK 22 LR

#### OPEN A CARTON FULL OF FUN

Carton-style Blazer® Pour Packs make it easy to handle all the ammo needed for a big day at the range. The cartons hold 425 rounds of Blazer 22 Long Rifle ammunition loaded with 38-grain round nose bullets. They're consistent, accurate and built for high-volume shooting. When range day is done, the containers close securely to hold the remaining rounds until your next shoot.

- 425-count convenient cartons
- 38-grain lead round nose bullets
- With a bull's-eye graphic printed on its side, the carton can be emptied, flattened and used as a target
- 1,235 fps muzzle velocity
- Clean-burning propellant and consistent non-corrosive priming



Caliber	Part #	Bullet		Test Barrel Length (inches)	Muzzle	Velocity, ft/sec			Energy, ft-lbs			Trajectory (inches)		
		Wt, (grs)	Type			50 yds	100 yds	Muzzle	50 yds	100 yds	25 yds	50 yds	75 yds	100 yds
22 Long Rifle	10026	38	LRN	24	1235	1090	995	135	100	84	0.7	1.3	0	-3.3







## BLAZER ALUMINUM

### GREAT ECONOMY THROUGH GREAT TECHNOLOGY

Shoot more with Blazer® Ammunition. Our aircraft-grade aluminum is heat-treated and provides the same great performance of brass-case ammo at a more economical price.

- Loaded with quality bullets and reliable ignition primers
- Wide selection of bullet weights and styles
- Greatly reduces the cost of practice



Caliber	Part #	Bullet		Test Barrel Length (inches)	Velocity, ft/sec			Energy, ft-lbs			Trajectory (inches)			
		Wt. (grs)	Type		Muzzle	50 yds	100 yds	Muzzle	50 yds	100 yds	25 yds	50 yds	75 yds	100 yds
25 Auto	3501	50	FMJ	2	755	712	673	63	56	50	0	-3.1	-10.6	-22.6
32 Auto	3503	71	FMJ	4	900	841	791	128	112	99	0	-2.0	-7.0	-15.3
380 Auto	3505	95	FMJ	3.75	945	888	839	188	166	149	0	-1.7	-6.1	-13.5
9x18mm Makarov	3506	95	FMJ RN	3.75	1000	930	874	211	182	161	0.7	0	-3.2	-9.1
9mm Luger	3509	115	FMJ	4	1145	1046	975	335	279	243	0	-0.9	-3.8	-8.9
	3578	124	FMJ	4	1090	1014	955	327	283	251	0	-1.1	-4.3	-9.7
	3582	147	FMJ	4	950	908	872	295	269	248	0	-1.6	-5.7	-12.7
38 Special	3522	158	LRN	4V	755	728	702	200	186	173	0	-3.2	-10.8	-22.1
38 Special +P	3514	125	JHP	4V	945	887	838	248	218	206	0	-1.7	-6.1	-13.5
	3519	158	FMJ	4V	850	816	785	253	234	216	0	-2.2	-7.4	-16.4
357 Magnum	3542	158	JHP	4V	1150	1056	987	464	391	364	0	-0.9	-3.7	-8.7
40 S&W	3587	155	FMJ	4	1175	1049	965	475	378	320	0	-0.9	-3.7	-8.7
	3589	165	FMJ	4	1100	1006	938	443	371	323	0	-1.1	-4.3	-9.8
	3591	180	FMJ	4	1000	937	886	400	351	313	0	-1.4	-5.2	-11.8
10mm Auto	3597	200	FMJ	5	1050	985	933	490	431	387	0	-1.2	-4.6	-10.4
44 Special	3556	200	JHP	5.15	920	872	829	376	337	305	0	-1.7	-6.3	-14.0
44 Magnum	3564	240	JHP	6.5V	1200	1092	1015	767	636	549	0	-0.8	-3.3	-7.9
45 Auto	3570	230	FMJ	5	845	807	773	365	333	305	0	-2.3	-7.8	-17.0
45 Colt	3584	200	JHP	7.26	1000	935	882	444	388	345	0	-1.4	-5.3	-11.8

**BLAZER CLEAN-FIRE**

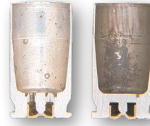
**LEAD-FREE SHOOTING THAT'S EASY ON YOUR BUDGET**

Designed for indoor ranges, these loads feature CCI® Clean-Fire® primers, which virtually eliminate airborne lead, barium and antimony at the firing point.

- Loaded with Speer® TMJ® bullets
- Realistic recoil and point-of-impact

**THE VISIBLE DIFFERENCE**

Spent Clean-Fire cases look almost unfired when compared to traditionally primed ammunition.



Caliber	Part #	Bullet		Test Barrel Length (inches)	Velocity, ft/sec			Energy, ft-lbs			Trajectory (inches)			
		Wt, (grs)	Type		Muzzle	50 yds	100 yds	Muzzle	50 yds	100 yds	25 yds	50 yds	75 yds	100 yds
9mm Luger	3460	124	TMJ	4	1090	1014	955	327	283	251	0	-1.1	-4.3	-9.7
	3462	147	TMJ FN	4	985	938	898	317	287	263	0.7	0	-3.2	-9.0
38 Special +P	3475	158	TMJ	4V	850	816	785	253	234	216	0	-2.2	-7.4	-16.4
40 S&W	3477	180	TMJ	4	1000	937	886	400	351	313	0	-1.4	-5.2	11.8
45 Auto	3480	230	TMJ	5	845	807	773	365	333	305	0	-2.3	-7.8	-17.0

**BLAZER BRASS**

**ECONOMIC RELIABILITY**

Blazer® Brass brings shooters the reliability and quality of ammunition built to SAAMI standards. It features reloadable brass cases, reliable ignition CCI primers, clean-burning propellants and more.

- Backed by stringent ISO-certified quality systems
- Standard Boxer-type primers and primer pockets make reloading easy
- Available in today's popular handgun calibers with standard-weight bullets



Caliber	Part #	Bullet		Test Barrel Length (inches)	Velocity, ft/sec			Energy, ft-lbs			Trajectory (inches)			
		Wt, (grs)	Type		Muzzle	50 yds	100 yds	Muzzle	50 yds	100 yds	25 yds	50 yds	75 yds	100 yds
380 Auto	5202	95	FMJ RN	3.75	945	888	839	188	166	149	0	-1.7	-6.1	-13.5
9mm Luger	5200	115	FMJ RN	4	1145	1046	975	323	278	247	0	-0.9	-3.8	-8.9
	5201	124	FMJ RN	4	1090	1014	955	327	283	251	0	-1.1	-4.3	-9.7
	5203	147	FMJ RN	4	990	936	891	320	286	259	0	0	-5.4	-11.9
38 Special	5204	125	FMJ FN	4V	865	824	786	208	188	172	0	-2.2	-7.5	-16.2
357 Magnum	5207	158	JHP	4V	1250	1130	1044	548	448	382	0	-0.4	-2.6	-6.6
40 S&W	5210	165	FMJ FN	4	1050	971	911	404	345	304	0	-1.1	-4.3	-9.8
	5220	180	FMJ FN	4	985	935	875	388	350	306	0	-1.4	-5.2	-11.8
45 Auto	5230	230	FMJ RN	5	830	794	760	352	322	295	0	-2.4	-8.2	-17.5

Performance data derived from industry test barrels: provided for reference. Velocities from production firearms may vary. Specifications subject to change without notice.



## BLAZER BRASS BUCKETS

### BETTER BY BULK

Shooters who train with Blazer Brass have a high-volume option. Blazer Brass Buckets feature 200 to 500 rounds of loose ammunition in rugged plastic buckets that stack, store and transport easily.

- Rugged plastic buckets
- Reloadable brass cases
- Clean, reliable CCI primer

**AVAILABLE IN  
380 AUTO, 9MM LUGER,  
40 S&W AND 45 AUTO**



## BLAZER 22 LR

### PLINKING PERFORMER

Our .22 Long Rifle ammo is loaded with a 40-grain bullet that's great for everything from small game hunting to casual plinking. Now available in buckets!



Cartridge	Part #	Wt, (grs)	Bullet		Velocity, ft/sec			Est. Handgun	Energy, ft-lbs			Trajectory (inches)			Box Ct.	
			Style	Type	Muzzle	50 yds	100 yds		Muzzle	50 yds	100 yds	25 yds	50 yds	75 yds		100 yds
22 Long Rifle	0021	40	LRN	High Velocity	1235	1104	1026	1060	135	108	93	0.7	1.2	0	-3.2	50
22 Long Rifle	10022	38	LRN	High Velocity	1235	1090	995	1060	135	100	84	0.7	1.3	0	-3.3	525
22 Long Rifle	10025	38	LRN	High Velocity	1235	1090	995	1060	135	100	84	0.7	1.3	0	-3.3	1500

#### Abbreviation Key

FMJ—full metal jacket

FN—flat nose

HP—hollow point

L—lead

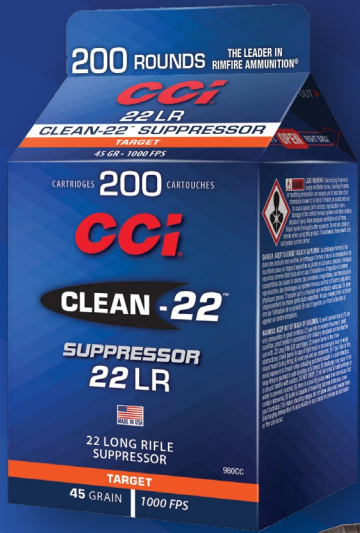
J—jacketed

TMJ®—encased-core full jacket

RN—round nose

Test barrels are used to determine ballistic figures. Individual firearms may vary. These figures are approximate and are shown for reference. V = Vented test barrel simulating revolver performance.





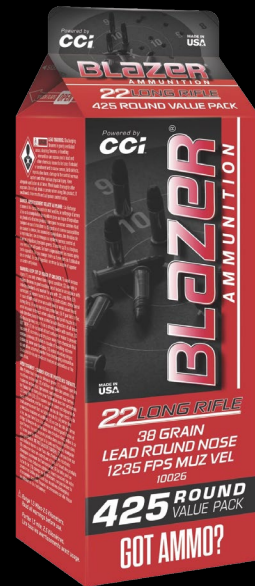
**CLEAN-22® NEW!**  
**SUPPRESSOR**  
PAGE 14



**MAXI-MAG® NEW!**  
**SEGMENTED HP**  
**22 WMR**  
PAGE 5



**BLAZER BRASS NEW!**  
**10MM AUTO**  
PAGE 24



**POUR PACK 22 LR NEW!**  
PAGE 24



**VISTA™**

— OUTDOOR —

BRINGING THE WORLD OUTSIDE™

cci-ammunition.com • blazer-ammo.com  
© 2019 F.C.C. CCI/SPEER OPERATIONS