



SPEER[®]

2020 CATALOG

SPEER®



When law enforcement agencies select ammunition to defend their communities, they choose Speer® Gold Dot®. When serious shooters train, you'll find Speer Lawman® in the chamber. And when reloaders set out to craft the finest possible handloads for any game or target, they reach for Speer's vast line of component bullets.

Our bullets and ammunition have defined an industry, and we still lead with direct-to-consumer sales at speer-ammo.com.

It's just the latest way we're serving shooters.
Thank you for trusting Speer.



CONTENTS

AMMUNITION

Gold Dot G2®	4-5
Gold Dot® Personal Protection	6-7
Gold Dot Rifle	8-9
Lawman® Training	10-11

COMPONENT BULLETS

RIFLE

Hunting	12-13
Varmint	14-15
Target & Plinking	16-17

HANDGUN

Hunting & Personal Protection	18-19
Target & Action	20-21

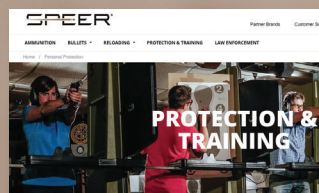
SPECIALTY & ACCESSORIES	22-23
-------------------------	-------



MC16

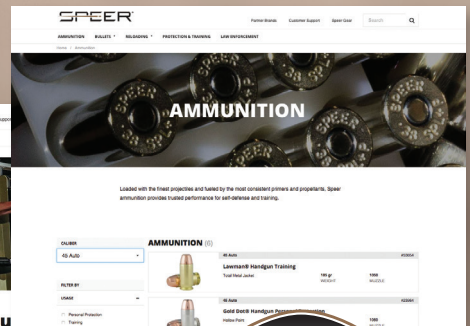
PURCHASE ONLINE

Direct from the plant to your front door. Now select products can be purchased at speer-ammo.com.



Performance You Can Trust

All shooting disciplines are serious and the standards are always high, but nothing compares to personal protection. Because when lives hang in the balance, performance has to be perfect in failure. That's why we build Gold Double Personal Protection and ballistically matched Leaman® training loads. Learn what separates them from all other ammunition.



BUY DIRECT
Now available for purchase online at speer-ammo.com

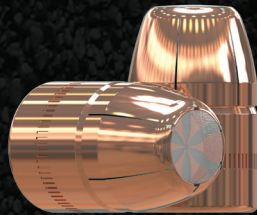
BUY DIRECT
 Now available for purchase online at speer-ammo.com

G2
GOLD DOT

NEW

THE NEXT GENERATION OF PROTECTION

Previously only offered to law enforcement, Speer® Gold Dot® G2® offers the ultimate performance for self-defense thanks to an exclusive nose design. Instead of a large hollow-point cavity, Gold Dot G2 has a shallow dish filled with a high-performance elastomer. On impact, the material is forced into engineered internal fissures to start the expansion process. The result is extremely uniform expansion, better separation of the petals, and more consistent penetration across barrier types through full-size handguns.

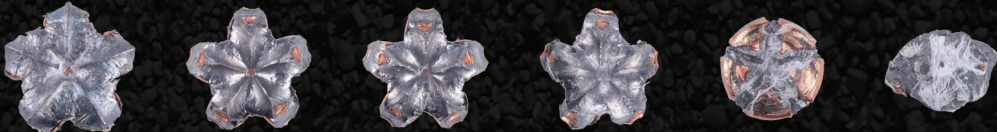


While most self-defense bullets use a deep hollow point to initiate expansion, Gold Dot G2 has a shallow dish filled with an elastomer material. On impact, this material forces the bullet open, providing consistent expansion through any barrier.

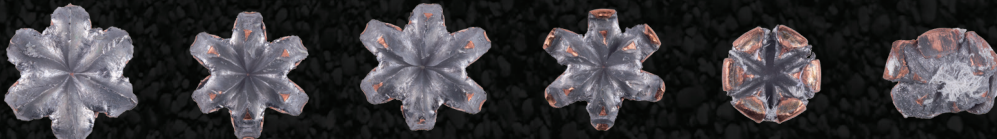
PROTOCOL PROVEN



9MM LUGER 147 GR. GOLD DOT G2						
Test Event	Bare Gelatin	Heavy Clothing	Wallboard	Plywood	Steel	Glass
Velocity	990	990	990	990	990	990
Penetration	14"	14.5"	14.5"	13.75"	15.25"	13.75"
Expansion	0.635" Dia.	0.629" Dia.	0.581" Dia.	0.575" Dia.	0.483" Dia.	0.533" Dia.
Retained Weight	100%	100%	100%	100%	100%	85%



40 S&W 180 GR. GOLD DOT G2						
Test Event	Bare Gelatin	Heavy Clothing	Wallboard	Plywood	Steel	Glass
Velocity	1000	1000	1000	1000	1000	1000
Penetration	15"	15.75"	13.5"	13.25"	14.5"	13.75"
Expansion	0.625" Dia.	0.675" Dia.	0.642" Dia.	0.672" Dia.	0.568" Dia.	0.598" Dia.
Retained Weight	100%	100%	100%	100%	100%	85%



45 AUTO +P 230 GR. GOLD DOT G2						
Test Event	Bare Gelatin	Heavy Clothing	Wallboard	Plywood	Steel	Glass
Velocity	950	950	950	950	950	950
Penetration	14.75"	15"	14"	13"	14"	14.5"
Expansion	0.835" Dia.	0.785" Dia.	0.77" Dia.	0.81" Dia.	0.61" Dia.	0.628" Dia.
Retained Weight	100%	100%	100%	100%	100%	92%

CARRY  GUN



GOLD DOT CARRY GUN **NEW!**

Compact pistols have never offered this level of protection. Speer® has built upon the law enforcement-proven Gold Dot G2 bullet, optimizing the design and loading to provide superior feeding, ballistics and terminal performance through compact concealed handguns.

SPEER® GOLD DOT® G2®

Caliber	Part #	Bullet		Test Barrel Length (in)	Muzzle	Velocity, fps		Muzzle	Energy, ft-lbs		Trajectory (25 yd sight-in), inches*			
		Wt. (grs)	Type			50 yds	100 yds		50 yds	100 yds	25 yds	50 yds	75 yds	100 yds
9mm Luger	54226	147	G2	4	990	932	883	320	283	255	0	-1.5	-5.4	-12.0
40 S&W	53999	180	G2	4	1000	940	890	400	353	317	0	-1.4	-5.3	-11.8
45 Auto	54256	230	G2	5	950	899	855	461	412	373	0	-1.7	-6.0	-13.1

SPEER GOLD DOT CARRY GUN

9mm Luger	24260	135	GDCG	4	1120	1028	961	376	317	277	0	-1.0	-4.0	-9.3
40 S&W	24259	165	GDCG	4	1150	1049	977	484	403	350	0	-0.9	-3.8	-8.8
45 Auto	24258	200	GDCG	5	1130	1035	967	567	476	415	0	-1.0	-4.0	-9.1

BUY DIRECT
 Now available for purchase online at speer-ammo.com

GOLD·DOT®

TESTED. PROVEN. TRUSTED.

Gold Dot® ammunition's reliability has made it the No. 1 load for law enforcement, and we offer the same performance to you. Using our exclusive Uni-Cor® method, we bond the jacket to the core one molecule at a time at the very beginning of the bullet construction process. This virtually eliminates core-jacket separation and creates a precision hollow point that is accurate, tough and unbelievably consistent. With options for both standard handguns and short barrels, there's a Gold Dot load to fit any shooter.

CONSTRUCTION

1



The Speer® Gold Dot bullet begins with an alloyed lead core.

2



Gold Dot technology bonds an incredibly uniform jacket to the core—one molecule at a time.

3

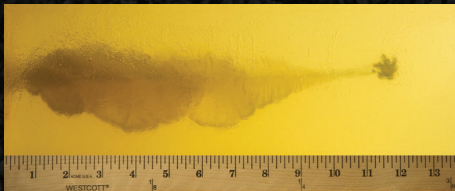


First stage of the patented two-stage hollow point process creates memory lines that expansion can follow.

4



Second forming stage finishes the cavity to match bullet weight and velocity, producing a smooth leading edge for reliable feeding, and a uniform heel for superb accuracy.



Gold Dot has been proven to provide optimum penetration and expansion through ballistic gelatin and all barriers used in FBI protocol testing. Tests conducted with 9mm Luger 124-grain +P Gold Dot (23617).



FBI Protocol Tests						
Test Event	Bare Gelatin	Heavy Clothing	Plywood	Steel	Wallboard	Auto Glass
Velocity	1226 fps	1226 fps	1226 fps	1226 fps	1226 fps	1226 fps
Penetration	11.78"	14.13"	14"	27.63"	12.5"	14.95"
Expansion	.759" Dia.	.569" Dia.	.577" Dia.	.438" Dia.	.693" Dia.	.518" Dia.
Retained Weight	100%	100%	100%	100%	100%	83.5%

GOLD DOT SHORT BARREL® PERSONAL PROTECTION

FULL-SIZE DEFENSE FROM COMPACT PISTOLS



At one time, packing a compact handgun meant sacrificing performance. Gold Dot Short Barrel has changed that. It works in barrels as short as 1.9 inches and has been proven by both law enforcement and private citizens. The loads produce less felt recoil while achieving reliable expansion at a variety of distances and velocities.



PROVEN BY LAW ENFORCEMENT

When those who put their life on the line every day choose Speer, it says more than words ever can. Speer Gold Dot is the No. 1 choice of law enforcement for good reason—unfailing reliability, unmatched terminal performance and superb accuracy. Trusted by these departments, plus thousands more.

**California Highway Patrol • New Jersey State Police • Las Vegas Metro Police • Pennsylvania State Police • Nassau County Police
Austin Police • Palm Beach County Sheriff • Honolulu Police • San Antonio Police • Union Pacific Railroad Police**

SPEER® GOLD DOT® HANDGUN PERSONAL PROTECTION

Caliber	Part #	Bullet		Test Barrel Length (in)	Muzzle	Velocity, fps		Muzzle	Energy, ft-lbs		Trajectory (25 yd sight-in), inches*			
		Wt. (grs)	Type			50 yds	100 yds		50 yds	100 yds	25 yds	50 yds	75 yds	100 yds
25 Auto	23602GD	35	GDHP	2	900	830	770	63	54	46	⊕	-2.0	-7.2	-15.7
32 Auto	23604GD	60	GDHP	4	960	894	840	123	107	94	⊕	-1.6	-6.0	-13.2
327 Federal Magnum	23913GD	100	GDHP	4	1600	1324	1181	500	389	310	⊕	-0.2	-1.6	-4.5
380 Auto	23606GD	90	GDHP	3.75	1040	907	842	196	164	142	⊕	-1.5	-5.7	-12.7
9mm Luger	23614GD	115	GDHP	4	1210	1071	981	374	293	246	⊕	-0.8	-3.5	-8.2
	23618GD	124	GDHP	4	1150	1039	963	364	297	255	⊕	-0.9	-3.9	-9.0
	23619GD	147	GDHP	4	985	932	887	317	284	257	⊕	-1.5	-5.5	-12.0
9mm Luger +P	23617GD	124	GDHP	4	1220	1085	996	410	324	273	⊕	-0.8	-3.3	-8.0
357 SIG*	23918GD	125	GDHP	4	1350	1184	1066	506	389	316	⊕	-0.5	-2.5	-6.2
357 Magnum	23920GD	125	GDHP	4-V	1450	1261	1118	584	441	347	⊕	-0.3	-2.0	-5.2
	23960GD	158	GDHP	4-V	1235	1119	1036	535	440	377	⊕	-0.7	-3.1	-7.4
40 S&W	23970GD	165	GDHP	4	1150	1042	967	484	398	342	⊕	-0.9	-3.9	-8.9
	23962GD	180	GDHP	4	1025	956	902	420	365	325	⊕	-1.3	-5.0	-11.2
10mm Auto	54000GD	200	GDHP	5	1100	1030	976	537	471	423	⊕	-1.3	-4.7	-10.2
44 Special	23980GD	200	GDHP	6	875	832	794	340	308	280	⊕	-2.1	-7.3	-15.8
45 Auto	23964GD	185	GDHP	5	1050	955	886	453	375	322	⊕	-1.3	-4.9	-11.1
	23966GD	230	GDHP	5	890	845	805	404	365	331	⊕	-2.0	-7.1	-15.3

SPEER® GOLD DOT® SHORT BARREL® PERSONAL PROTECTION

Caliber	Part #	Bullet		Test Barrel Length (in)	Muzzle	Velocity, fps		Muzzle	Energy, ft-lbs		Trajectory (25 yd sight-in), inches*			
		Wt. (grs)	Type			50 yds	100 yds		50 yds	100 yds	25 yds	50 yds	75 yds	100 yds
22 Win. Mag.*	954	40	GDHP-SB	1.9	1050	966	898	99	83	72	⊕	-1.2	-4.8	-10.9
9mm Luger +P	23611GD	124	GDHP-SB	3.5	1150	1039	963	364	297	255	⊕	-0.9	-3.9	-9.0
38 Special +P	23921GD	135	GDHP-SB	2-V	860	818	780	222	200	182	⊕	-2.2	-7.6	-16.4
357 Magnum	23917GD	135	GDHP-SB	2-V	990	928	877	294	258	231	⊕	-1.5	-5.5	-12.1
40 S&W	23974GD	180	GDHP-SB	3.5	950	898	854	361	322	291	⊕	-1.7	-6.0	-13.2
45 Auto	23975GD	230	GDHP-SB	4	820	783	749	343	313	287	⊕	-2.5	-8.5	-18.3

* Available 50 count

Handgun Trajectory: bullet path relative to line-of-sight when sighted for 25 yards (sight height 0.9 inches). Test barrels are used to determine ballistic figures. Individual firearms may vary. These figures are approximate and are shown for reference. V = Vented test barrel simulating revolver performance. These trajectory tables were calculated by computer using the best available data for each load. Trajectories are representative of the nominal behavior of each load at standard conditions (59°F temperature; barometric pressure of 29.53 inches; altitude at sea level). Shooters are cautioned that actual trajectories may differ due to variations in altitude, atmospheric conditions, guns, sights and ammunition. GD = Gold Dot®, HP = Hollow Point, SB = Short Barrel®

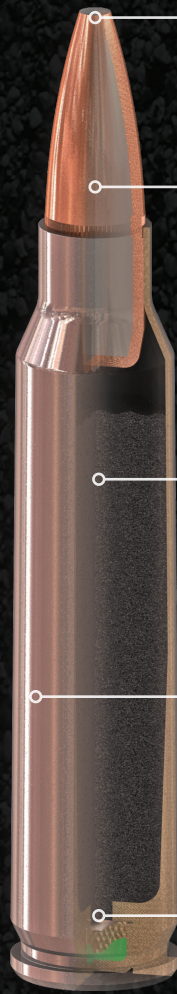
BUY DIRECT
 Now available for purchase online at speer-ammo.com

GOLD·DOT®

NEW

KEEPING THREATS AT BEYOND ARM'S LENGTH

Gold Dot® ammunition's reliability has made it the No. 1 choice for law enforcement, and now we offer the same performance for self-defense rifle applications. New Gold Dot Short Barrel rifle is engineered to provide industry-leading performance in FBI protocol testing through common defensive rifles. Its bullets are built using Speer's exclusive Uni-Cor® method.



Bullet geometry optimized for short barrels

Gold Dot technology virtually eliminates core/jacket separation and produces a uniform jacket for great accuracy

Select, clean-burning propellant for low-flash, optimum velocities, and the shot-to-shot consistency you need

Nickel-plated brass cases for smooth functioning and durability

Non-corrosive, non-mercuric primers for reliable ignition under tough conditions

GOLD DOT RIFLE

Caliber	Part #	Grains	Bullet Style	BC G1	Muzzle	Velocity In Feet Per Second (To Nearest 10 fps)		
						100	200	300
223 Rem. (5.56x45mm)	24468	55	GDSP	0.222	3220	2782	2383	2019
223 Rem. (5.56x45mm)	24461	62	GDSP	0.310	3000	2697	2413	2148
223 Rem. (5.56x45mm)	24469	75	GDSP	0.400	2775	2550	2336	2132
300 Blackout	24462	150	GDSP	0.330	1900	1685	1490	1320
308 Win.	24467	150	GDSP	0.414	2820	2600	2391	2191



Muzzle	Energy In Foot-Pounds (To Nearest 5 Foot-Pounds)			Height Of Bullet Trajectory In Inches Above Or Below Line Of Sight If Zeroed At @ Yards. Sights 1.5 Inches Above Bore Line.							Test Barrel Lenth Inches
	100	200	300	50	Average Range 100	200	300	Long Range 400	500		
1266	945	694	498	-0.3	⊕	-3	-12.2	-30.2	-60.6	24	
1239	1001	802	635	-0.2	⊕	-3.3	-12.6	-29.3	-56.2	24	
1282	1083	908	757	-0.1	⊕	-3.8	-14.1	-31.9	-59.2	24	
1202	946	739	580	0.6	⊕	-10.8	-37.3	-83.9	-155.6	16	
2648	2252	1903	1599	-0.2	⊕	-3.6	-13.4	-30.3	-55.9	24	

TAKE TRAINING TO THE NEXT LEVEL

If you practice with ammunition that doesn't match the ballistics of your carry loads, you're not training—you're just shooting. That's why we build Speer[®] Lawman[®]. It's extremely reliable, with feel and point of aim that's as close as possible to comparable defense loads. All options feature reloadable brass and a Speer TMJ[®] bullet with a jacket that encapsulates the entire lead core for clean, consistent performance.

LAWMAN CLEAN-FIRE[®] TRAINING

CLEAR THE AIR



Lawman Clean-Fire ammunition gives shooters ideal indoor options. These offerings use the patented Clean-Fire primer, which contains no lead, barium or antimony. And the bullet is Speer's TMJ. This means the lead core is completely encased so powder gases can't burn lead off the bullet base. Range air, and your firearm, will be much cleaner when you shoot these special loads.

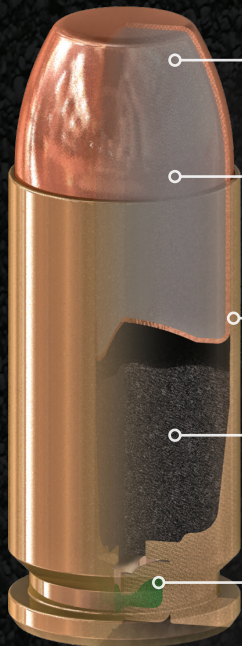
THE VISIBLE DIFFERENCE



Lawman Clean-Fire spent cases look almost unfired when compared to traditionally primed ammunition. The heavy metals have been removed, producing a clean burn.



Lawman, 45 Auto 230-grain,
5 shots handheld at 50 feet,
1.125-inch group



— Speer TMJ bullet with one-piece jacket

— The lead core is completely and seamlessly encased in jacket material, so powder gases can't burn lead off the bullet base

— Reloadable brass cases manufactured to tight tolerances

— Clean-burning propellants deliver optimum velocity while ensuring consistent chamber pressures

— CCI[®] primers for highly sensitive and reliable ignition

LAWMAN
AMMUNITION

30
ROUNDS

380 AUTO 95 GR. TMJ
53608



SPEER® LAWMAN® TRAINING

Caliber	Part #	Bullet		Test Barrel Length (in)	Muzzle	Velocity, fps			Energy, ft-lbs		Trajectory (25 yd sight-in), inches*			
		Wt. (grs)	Type			50 yds	100 yds	Muzzle	50 yds	100 yds	25 yds	50 yds	75 yds	100 yds
380 Auto	53608	95	TMJ RN	3.75	950	892	843	190	168	150	⊕	-1.7	-6.0	-13.4
	53650	115	TMJ RN	4	1200	1098	1024	368	308	268	⊕	-0.8	-3.3	-7.8
9mm Luger	53651	124	TMJ RN	4	1090	1011	951	327	281	249	⊕	-1.1	-4.3	-9.7
	53620	147	TMJ FN	4	985	932	888	317	284	257	⊕	-1.5	-5.5	-12.0
38 Special +P	53750	158	TMJ FN	4-V	900	861	826	284	260	240	⊕	-1.9	-6.8	-14.7
357 SIG	53919	125	TMJ FN	4	1325	1171	1061	487	380	313	⊕	-0.5	-2.6	-6.5
	53957	155	TMJ FN	4	1175	1049	965	475	378	320	⊕	-0.9	-3.7	-8.7
40 S&W	53955	165	TMJ FN	4	1150	1040	964	484	396	340	⊕	-0.9	-3.9	-9.0
	53954	165	TMJ FN	4	1150	1042	967	484	398	342	⊕	-0.9	-3.9	-8.9
	53652	180	TMJ FN	4	1000	937	885	400	351	313	⊕	-1.4	-5.3	-11.8
45 G.A.P.	53979	185	TMJ FN	5	1060	950	872	462	370	312	⊕	-1.3	-5.0	-11.2
	53980	200	TMJ FN	5	990	908	843	435	366	316	⊕	-1.5	-5.7	-12.7
45 Auto	53654	185	TMJ FN	5	1050	943	867	453	365	308	⊕	-1.3	-5.1	-11.5
	53653	230	TMJ FN	5	830	794	760	352	322	295	⊕	-2.4	-8.2	-17.7

SPEER® LAWMAN® CLEAN-FIRE® TRAINING

Caliber	Part #	Bullet		Test Barrel Length (in)	Muzzle	Velocity, fps			Energy, ft-lbs		Trajectory (25 yd sight-in), inches*			
		Wt. (grs)	Type			50 yds	100 yds	Muzzle	50 yds	100 yds	25 yds	50 yds	75 yds	100 yds
9mm Luger	53824	124	TMJ RN	4	1090	1019	965	327	286	256	⊕	-1.1	-4.2	-9.6
	53826	147	TMJ FN	4	985	932	888	317	284	257	⊕	-1.5	-5.5	-12
38 Special +P	53833	158	TMJ FN	4-V	900	861	826	284	260	240	⊕	-1.9	-6.8	-14.7
357 SIG	54232	125	TMJ FN	4	1350	1190	1074	506	393	320	⊕	-0.5	-2.5	-6.2
40 S&W	53880	180	TMJ FN	4	975	937	885	400	351	313	⊕	-1.4	-5.3	-11.8
45 Auto	53885	230	TMJ RN	5	845	807	773	365	333	305	⊕	-2.3	-7.9	-16.9

*Handgun Trajectory: bullet path relative to line-of-sight when sighted for 25 yards (sight height 0.9 inches). Test barrels are used to determine ballistic figures. Individual firearms may vary. These figures are approximate and are shown for reference. V = Vented test barrel simulating revolver performance. FN = Flat Nose, TMJ = Total Metal Jacket, RN = Round Nose

BUY DIRECT
Now available for purchase online at speer-ammo.com

BIG GAME & SELF-DEFENSE RIFLE BULLETS

When you plan the hunt of a lifetime, load Speer® big game rifle bullets, including our all-range Impact. When you plan for the worst, choose our Gold Dot® rifle bullets. All have been proven by decades of service in the field. Trust them when the moment of truth comes.

IMPACT

MAKE DISTANCE MEANINGLESS



Take your hunts and your handloads farther than you ever thought possible. The new Speer Impact blends tough, molecularly bonded construction with high ballistic coefficients and the Slipstream™ polymer tip. The combination results in deep penetration at close range as well as extreme accuracy and consistent low-velocity expansion at long distances.

GRAND SLAM™

SUPERIOR PERFORMANCE, EXCEPTIONAL ACCURACY



With a tapered, precision-drawn jacket and a long nose, the Grand Slam bullet is engineered to blow through the thick hides, heavy bones and tough bodies of the world's biggest game—without sacrificing accuracy. On impact, internal jacket flutes allow consistent expansion, yet the bullet retains most of its weight for deep penetration every time.

HOT-COR™

CONSISTENT AND ACCURATE



Get incredibly reliable all-range accuracy and terminal performance with Speer Hot-Cor bullets. Molten lead is poured into the jacket during the construction process to maximize consistency while minimizing cost to the shooter.

BOAT-TAIL

BUILT FOR LONG RANGE



Extend your range on medium game with Speer Boat-Tail bullets. Designed for the long-range shooter, the tapered heel of these bullets flattens trajectories and decreases wind drift. On impact, they expand rapidly for quick, clean kills.

GOLD DOT PERSONAL PROTECTION

DEMONSTRATED SELF-DEFENSE



Speer offers duty-proven performance in a new line of Gold Dot Personal Protection rifle bullets. Their exclusive manufacturing process bonds the uniform jacket to the core one atom at a time, ensuring proper expansion, nearly 100 percent weight retention and immediate, threat-stopping performance.

IMPACT RIFLE BULLETS

Caliber	Part No.	Diameter	Weight	Bullet Type	Velocity (ft/s)	G1 BC	G7 BC	SD	Box Count
6.5mm	TB264H1	0.264	140	Impact	3,000 - 2,500	0.646	0.323	0.287	50
					2,500 - 2,000	0.620	0.312		
					2,000 - 1,500	0.584	0.301		
30 Caliber	TB308H1	0.308	172	Impact	3,000 - 2,500	0.567	0.284	0.259	50
					2,500 - 2,000	0.548	0.275		
					2,000 - 1,500	0.518	0.267		
30 Caliber	TB308H2	0.308	190	Impact	3,000 - 2,500	0.595	0.298	0.286	50
					2,500 - 2,000	0.574	0.288		
					2,000 - 1,500	0.539	0.278		

GRAND SLAM® RIFLE BULLETS

Caliber	Part No.	Diameter	Weight	Bullet Type	BC	SD	Box Count
243 Caliber	1222	0.243	100	GSSP	0.327	0.242	50
25 Caliber	1415	0.257	120	GSSP	0.356	0.260	50
6.5mm	1444	0.264	140	GSSP	0.498	0.287	50
270 Caliber	1465	0.277	130	GSSP	0.332	0.242	50
270 Caliber	1608	0.277	150	GSSP	0.378	0.279	50
7mm	1632	0.284	145	GSSP	0.353	0.257	50
7mm	1638	0.284	160	GSSP	0.389	0.283	50
7mm	1643	0.284	175	GSSP	0.436	0.310	50
30 Caliber	2038	0.308	165	GSSP	0.354	0.248	50
30 Caliber	2063	0.308	180	GSSP	0.374	0.271	50
338 Caliber	2408	0.338	250	GSSP	0.436	0.313	50

HOT-COR® RIFLE BULLETS

Caliber	Part No.	Diameter	Weight	Bullet Type	BC	SD	Box Count
6mm	1217	0.243	90	Spitzer SP	0.365	0.218	100
25 Caliber	1241	0.257	87	Spitzer SP	0.300	0.188	100
25 Caliber	1405	0.257	100	Spitzer SP	0.334	0.216	100
25 Caliber	1237	0.257	75	SPFN	0.135	0.162	100
6.5mm	1441	0.264	140	Spitzer SP	0.498	0.287	100
270 Caliber	1459	0.277	130	Spitzer SP	0.383	0.242	100
270 Caliber	1605	0.277	150	Spitzer SP	0.455	0.279	100
7mm	1623	0.284	130	Spitzer SP	0.368	0.230	100
7mm	1629	0.284	145	Spitzer SP	0.416	0.257	100
7mm	1635	0.284	160	Spitzer SP	0.504	0.283	100
30 Caliber	2007	0.308	130	SPFN	0.213	0.196	100
30 Caliber	2011	0.308	150	SPFN	0.255	0.226	100
30 Caliber	2023	0.308	150	Spitzer SP	0.377	0.226	100
30 Caliber	2035	0.308	165	Spitzer SP	0.444	0.248	100
30 Caliber	2041	0.308	170	SPFN	0.298	0.256	100
30 Caliber	2053	0.308	180	Spitzer SP	0.441	0.271	100
30 Caliber	2211	0.308	200	Spitzer SP	0.478	0.301	50
303 Caliber	2217	0.311	150	Spitzer SP	0.351	0.222	100
303 Caliber	2223	0.311	180	SPRN	0.299	0.266	100
32 Caliber	2259	0.321	170	SPFN	0.283	0.236	100
8mm	2277	0.323	150	Spitzer SP	0.343	0.205	100
8mm	2283	0.323	170	Semi-Spitzer SP	0.311	0.233	100
8mm	2285	0.323	200	Spitzer SP	0.440	0.274	50
338 Caliber	2405	0.338	200	Spitzer SP	0.426	0.250	50
358 Caliber	2435	0.358	180	SPFN	0.236	0.201	100
358 Caliber	2439	0.358	220	SPFN	0.286	0.245	50
358 Caliber	2453	0.358	250	Spitzer SP	0.422	0.279	50
9.3mm	2459	0.366	270	Semi-Spitzer SP	0.361	0.288	50
375 Caliber	2471	0.375	235	Semi-Spitzer SP	0.301	0.239	50
416 Caliber	2477	0.416	350	Mag-Tip	0.332	0.289	50
45 Caliber	2478	0.458	350	SPFN	0.218	0.238	50
45Caliber	2479	0.458	400	SPFN	0.259	0.272	50

BOAT-TAIL RIFLE BULLETS

Caliber	Part No.	Diameter	Weight	Bullet Type	BC	SD	Box Count
6mm	1213	0.243	85	BTSP	0.380	0.206	100
6mm	1220	0.243	100	BTSP	0.446	0.242	100
25 Caliber	1408	0.257	100	BTSP	0.393	0.216	100
25 Caliber	1410	0.257	120	BTSP	0.480	0.260	100
270 Caliber	1458	0.277	130	BTSP	0.412	0.242	100
270 Caliber	1604	0.277	150	BTSP	0.489	0.279	100
7mm	1624	0.284	130	BTSP	0.424	0.230	100
7mm	1628	0.284	145	BTSP	0.472	0.257	100
7mm	1634	0.284	160	BTSP	0.519	0.283	100
30 Caliber	2022	0.308	150	BTSP	0.417	0.226	100
30 Caliber	2034	0.308	165	BTSP	0.520	0.248	100
30 Caliber	2052	0.308	180	BTSP	0.545	0.271	100
338 Caliber	2406	0.338	225	BTSP	0.497	0.281	50
375 Caliber	2472	0.375	270	BTSP	0.478	0.274	50

GOLD DOT® RIFLE BULLETS

Caliber	Part No.	Diameter	Weight	Bullet Type	BC	SD	Box Count
224 Caliber	22455GDB	0.224	55	SP	0.250	0.148	100
224 Caliber	22462GDB	0.224	62	BTSP	0.310	0.177	100
224 Caliber	22475GDB	0.224	75	BTSP	0.411	0.214	100
264 Caliber	264120GDB	0.264	120	BTSP	0.457	0.246	50
264 Caliber	264140GDB	0.264	140	BTSP-Creedmoor	0.571	0.287	50
277 Caliber	277115GDB	0.277	115	BTSP-6.8 SPC	0.401	0.214	50
277 Caliber	27790GDB	0.277	90	SP	0.253	0.168	50
308 Caliber	308150BLKGDB	0.308	150	SP 300 Blk	0.463	0.226	50
308 Caliber	308150GDB	0.308	150	BTSP	0.503	0.226	50
308 Caliber	308168GDB	0.308	168	BTSP	0.572	0.253	50
310 Caliber	310123GDB	0.310	123	SP	0.321	0.183	50

ABBREVIATION KEY: BTSP = Boat Tail Soft Point, SPFN = Soft Point Flat Nose, CANN = Cannelured, SP = Soft Point, SPRN = Soft Point Round Nose

**BUY
DIRECT**

Now available for
purchase online at
speer-ammo.com

VARMINT RIFLE BULLETS

When you get a shot at a predator—or a varmint that's constantly being hunted by them—it's often just for an instant and at long range. At Speer®, we understand this, so we carefully craft a full line of bullets designed specifically for the needs of predator and varmint hunters. All are pinpoint accurate and consistent, and provide terminal performance that puts down targets in their tracks.

TNT GREEN®

LETHAL AND LEAD-FREE



Exclusive non-lead bullet technology gives Speer TNT Green an edge over all other options—and all varmints. The bullet uses a thin jacket around a compressed powder core to produce not only long-range accuracy, but also explosive expansion and instant energy release on impact.

TNT®

EXPLOSIVE AND ACCURATE



Speer TNT gives predator and varmint hunters what they want most—long-range accuracy and maximum destruction on impact. Its thin precision jacket features internal fluting to ensure complete bullet disruption, while its high ballistic coefficient produces the flattest trajectories possible.

VARMINT HOLLOW POINT

VERSATILE AND DEADLY



Whether you're poppin' prairie dogs, taking aim at the range or calling 'yotes, you can count on Speer Varmint Hollow Points to deliver explosive performance and excellent accuracy. Available in a variety of calibers.

VARMINT SOFT POINT

ALL-AROUND PERFORMANCE



When you'd prefer controlled expansion over explosive terminal effects, choose Speer Varmint Soft Points. Their Spitzer tip provides both accuracy and superior terminal performance.

TNT GREEN® BULLETS

Caliber	Part No.	Diameter	Weight	Bullet Type	BC	SD	Box Count
22 Caliber Hornet	1021	0.224	30	TNT Green	0.091	0.085	100
22 Caliber	1028	0.224	50	TNT Green	0.190	0.142	100

TNT® BULLETS

Caliber	Part No.	Diameter	Weight	Bullet Type	BC	SD	Box Count
204 Caliber	1015	0.204	39	TNT HP	0.202	0.134	100
22 Caliber	1030	0.224	50	TNT HP	0.228	0.142	100
22 Caliber	4705	0.224	50	TNT HP	0.228	0.142	1000
22 Caliber HV	1032	0.224	55	TNT HP	0.233	0.157	100
6mm	1206	0.243	70	TNT HP	0.279	0.169	100
6mm	4720	0.243	70	TNT HP	0.279	0.169	750
25 Caliber	1246	0.257	87	TNT HP	0.337	0.188	100
25 Caliber	4722	0.257	87	TNT HP	0.337	0.188	750
6.5mm	1445	0.264	90	TNT HP	0.281	0.184	100
270 Caliber	1446	0.277	90	TNT HP	0.303	0.168	100
270 Caliber	4723	0.277	90	TNT HP	0.303	0.168	650
7mm	1616	0.284	110	TNT HP	0.384	0.195	100
30 Caliber	1986	0.308	125	TNT HP	0.341	0.188	100
30 Caliber	4725	0.308	125	TNT HP	0.341	0.188	500

VARMINT HOLLOW POINT BULLETS

Caliber	Part No.	Diameter	Weight	Bullet Type	BC	SD	Box Count
22 Caliber	1035	0.224	52	HP	0.225	0.148	100
22 Caliber	4708	0.224	52	HP	0.225	0.148	1000
6mm	1205	0.243	75	HP	0.192	0.181	100
25 Caliber	1407	0.257	100	HP	0.263	0.216	100
270 Caliber	1447	0.277	100	HP	0.201	0.186	100
30 Caliber	2005	0.308	130	HP	0.244	0.196	100
308 Caliber	1835	0.308	110	HP	0.150	0.167	100

VARMINT SOFT POINT BULLETS

Caliber	Part No.	Diameter	Weight	Bullet Type	BC	SD	Box Count
22 Caliber	1017	0.224	40	Spire SP	0.144	0.114	100
22 Caliber	1023	0.224	45	Spitzer SP	0.143	0.128	100
22 Caliber	1024	0.224	46	Bee SPFN	0.087	0.131	100
22 Caliber	1029	0.224	50	Spitzer SP	0.207	0.142	100
22 Caliber	1047	0.224	55	Spitzer SP	0.212	0.157	100
22 Caliber	4711	0.224	55	Spitzer SP	0.212	0.157	1000
22 Caliber	1053	0.224	70	Semi-Spitzer SP	0.219	0.199	100

ABBREVIATION KEY: HP = Hollow Point, HV = High Velocity, SP = Soft Point, SPFN = Soft Point Flat Nose

**BUY
DIRECT**

Now available for
purchase online at
speer-ammo.com

TARGET & PLINKING RIFLE BULLETS

Whether you compete for trophies at the highest levels or just for bragging rights at the range, you need projectiles that are reliable and accurate. Speer's line of rifle target bullets deliver for any need.

JACKETED HOLLOW POINT

COST-EFFECTIVE CONSISTENCY



High-volume shooters need consistent and affordable bullet options. The Speer® Jacketed Hollow Point delivers—without the hefty price tag.

TARGET MATCH

EXTENDED-RANGE ACCURACY



Shooting at extreme range requires a special kind of bullet. Speer Target Match projectiles have what it takes to go the distance—any distance—thanks to a low drag profile, precision jacket and consistent hollow point.

TMJ®

CLEAN AND ACCURATE



Speer TMJ stands in a category all its own. Standard FMJ bullets sacrifice accuracy by adding a separate piece of jacket to cover the bullet base—or leave exposed lead. TMJ rifle bullets totally encapsulate the lead core for cleaner, more accurate performance.



JACKETED HOLLOW POINT RIFLE							
Caliber	Part No.	Diameter	Weight	Bullet Type	BC	SD	Box Count
22 Caliber Hornet	1014	0.224	33	HP	0.080	0.094	100
45 Caliber	2482	0.458	300	HP/CANN	0.206	0.204	50

TARGET MATCH RIFLE							
Caliber	Part No.	Diameter	Weight	Bullet Type	BC	SD	Box Count
22 Caliber	1036	0.224	52	Match BTHP	0.230	0.148	100
30 Caliber	2040	0.308	168	Match BTHP	0.534	0.253	100

TMJ® RIFLE BULLET							
Caliber	Part No.	Diameter	Weight	Bullet Type	BC	SD	Box Count
30 Carbine	1846	0.308	110	TMJ RN	0.179	0.166	100

ABBREVIATION KEY: TMJ = Total Metal Jacket, RN = Round Nose, HP = Hollow Point, BTHP = Boat-Tail Hollow Point, CANN = Cannulure

HUNTING & PERSONAL PROTECTION HANDGUN BULLETS

**BUY
DIRECT**

Now available for
purchase online at
speer-ammo.com

Be prepared for a dream hunt or nightmare encounter with Speer's hard-hitting line of handgun bullets designed for hunting and defense. All utilize our electrochemical bonding process and other exclusive technologies so you can trust them to perform whenever called upon.

DEEPCURL® HUNTING

TOUGHNESS REDEFINED



Speer® electrochemically bonds the DeepCurl jacket to the lead core to create the toughest, most accurate handgun hunting bullet possible. Pre-formed petals expand reliably and consistently and the bullet's high weight retention ensures deep penetration on heavy-bodied game.

GOLD DOT®

PROVEN BY LAW ENFORCEMENT



Law enforcement professionals trust Gold Dot for a reason. The bullet's exclusive manufacturing process bonds the uniform jacket to the core one molecule at a time, ensuring proper expansion and nearly 100 percent weight retention. The result is immediate, threat-stopping performance.

To see how Gold Dot bullets are constructed, see pages 4-5.

GOLD DOT® SHORT BARREL® PERSONAL PROTECTION

FULL-SIZE PERFORMANCE



Speer offers the same bullets used in Gold Dot Short Barrel ammunition as a component for your reloading needs. These bullets are engineered for excellent expansion at velocities common to short-barreled handguns.

DEEPCURL® HANDGUN HUNTING

Caliber	Part No.	Diameter	Weight	Bullet Type	BC	SD	Box Count
38 Caliber	4215	0.357	158	DCHP/CANN	0.168	0.177	100
38 Caliber	4230	0.357	170	DCSP	0.185	0.191	100
41 Caliber	4430	0.410	210	DCHP/CANN	0.185	0.191	100
44 Caliber	4455	0.429	240	DCHP/CANN	0.175	0.186	100
44 Caliber	4456	0.429	240	DCSP/CANN	0.175	0.186	100
44 Caliber	4461	0.429	270	DCSP/CANN	0.193	0.210	50
45 Colt	4484	0.452	250	DCHP/CANN	0.165	0.175	50
45 Caliber	3974	0.452	300	DCHP/CANN	0.233	0.210	50
475 Caliber	3973	0.475	275	DCHP/CANN	0.162	0.174	50
475 Caliber	3978	0.475	325	DCSP/CANN	0.191	0.206	50
50 Action Express	4493	0.500	300	DCHP	0.155	0.171	50
500 S&W	4491	0.500	350	DCSP/CANN	0.178	0.200	50

ABBREVIATION KEY: DCHP = DeepCurl Hollow Point, DCSP = DeepCurl Soft Point, CANN = Cannulure

DeepCurl's unique construction process joins the jacket to the core at the molecular level for excellent performance and consistency. For this reason, conventional reloading data developed for standard jacketed bullets should not be used to load DeepCurl bullets. Only DeepCurl-specific reloading data or Gold Dot bullet data for the same part number released by Speer Bullets should be used. It can be obtained by contacting Speer Technical Services at 800-379-1732.

GOLD DOT® PERSONAL PROTECTION

Caliber	Part No.	Diameter	Weight	Bullet Type	BC	SD	Box Count
25 Caliber	3985	0.251	35	GDHP	0.091	0.079	100
327 Federal	3990	0.312	100	GDHP	0.150	0.147	100
380 Auto	3992	0.355	90	GDHP	0.101	0.102	100
9mm	3994	0.355	115	GDHP	0.125	0.130	100
9mm	3998	0.355	124	GDHP	0.134	0.141	100
9mm	4002	0.355	147	GDHP	0.164	0.167	100
357 Sig	4360	0.355	125	GDHP	0.141	0.142	100
357 Magnum	4012	0.357	125	GDHP/CANN	0.140	0.140	100
40 Caliber/10mm	4400	0.400	155	GDHP	0.123	0.138	100
40 Caliber/10mm	4397	0.400	165	GDHP	0.138	0.147	100
40 Caliber/10mm	4406	0.400	180	GDHP	0.143	0.161	100
44 Special	4427	0.429	200	GDHP/CANN	0.145	0.155	100
44 Magnum	4428	0.429	210	GDHP/CANN	0.154	0.163	100
45 Auto	4470	0.451	185	GDHP	0.109	0.130	100
45 Auto	4478	0.451	200	GDHP	0.138	0.140	100
45 Auto	4483	0.451	230	GDHP	0.143	0.162	100

GOLD DOT® SHORT BARREL® PERSONAL PROTECTION

Caliber	Part No.	Diameter	Weight	Bullet Type	BC	SD	Box Count
38 Special	4009	0.357	110	GDHP SB/CANN	0.117	0.123	100
38 Caliber	4014	0.357	135	GDHP SB/CANN	0.141	0.151	100
45 Caliber	4482	0.451	230	GDHP SB	0.148	0.162	100

ABBREVIATION KEY: GDHP = Gold Dot Hollow Point, GDHP SB = Gold Dot Hollow Point Short Barrel, CANN = Cannulure

**BUY
DIRECT**

Now available for
purchase online at
speer-ammo.com

TARGET & ACTION HANDGUN BULLETS

You expect peak performance in all other forms of shooting—insist on it at the range as well with Speer's complete line of handgun bullets. Our target and action pistol projectiles are built with our most exclusive technologies to perform to the highest standards.

TMJ®

CLEAN CONSISTENCY



Speer® uses Uni-Cor® technology to take full metal jacket bullets to their highest level of evolution with the Total Metal Jacket. Other FMJ bullets have an accuracy-robbing second piece to cover the lead, or have lead exposed at the base, which can deform under pressure. TMJ's seamless jacket means this can't happen. There's less airborne lead, and TMJs won't foul ported recoil compensators like open-base bullets do. We swage each bullet twice, ensuring consistent diameters and a uniform heel. TMJ bullets are great for action pistol competition.

JACKETED

READY FOR ACTION



Jacketed Handgun Bullets with Uni-Cor® technology boast a perfectly uniform jacket and are great options for action and competitive shooting. They are available in calibers from 32 to 50.

LEAD HANDGUN

MODERN CLASSIC



Speer cold-formed lead bullets are even better than ever with a technologically advanced multi-layer lube. The coating won't burn off, virtually eliminating leading problems and ensuring cleaner, more accurate shooting. It also won't melt off in storage or transport and is dry to the touch.

Available in calibers from 32 through 45, exclusively in bulk packs.

TMJ® HANDGUN BULLETS

Caliber	Part No.	Diameter	Weight	Bullet Type	BC	SD	Box Count
9mm	4001	0.355	95	TMJ RN	0.131	0.108	100
9mm	3995	0.355	115	TMJ RN	0.151	0.130	100
9mm	3993	0.355	124	TMJ RN	0.159	0.141	100
9mm	4726	0.355	124	TMJ RN	0.159	0.141	600
9mm	4006	0.355	147	TMJ FN	0.188	0.167	100
357 Sig	4362	0.355	125	TMJ FN	0.147	0.142	100
357 Sig	4731	0.355	125	TMJ FN	0.147	0.142	600
38 Caliber	4015	0.357	125	TMJ FN/CANN	0.146	0.140	100
38 Caliber	4207	0.357	158	TMJ FN/CANN	0.173	0.177	100
9mm Makarov	4375	0.364	95	TMJ RN	0.127	0.102	100
40 Caliber/10mm	4399	0.400	155	TMJ FN	0.125	0.138	100
40 Caliber/10mm	4410	0.400	165	TMJ FN	0.135	0.147	100
40 Caliber/10mm	4402	0.400	180	TMJ FN	0.143	0.161	100
40 Caliber/10mm	4734	0.400	180	TMJ FN	0.143	0.161	400
45 Caliber	4473	0.451	185	TMJ SWC	0.094	0.130	100
45 Caliber	4476	0.451	185	TMJ FN	0.094	0.130	100
45 Caliber	4475	0.451	200	TMJ SWC	0.128	0.140	100
45 Caliber	4480	0.451	230	TMJ RN	0.153	0.162	100
45 Caliber	4750	0.451	230	TMJ RN	0.153	0.162	300
50 Action Express	4490	0.500	300	TMJ FN	0.157	0.171	50

JACKETED HANDGUN BULLETS

Caliber	Part No.	Diameter	Weight	Bullet Type	BC	SD	Box Count
38 Caliber	4007	0.357	110	JHP/CANN	0.113	0.123	100
38 Caliber	4013	0.357	125	JHP/CANN	0.129	0.140	100
38 Caliber	4211	0.357	158	JHP/CANN	0.163	0.177	100
38 Caliber	4732	0.357	158	JHP/CANN	0.163	0.177	450
38 Caliber	4217	0.357	158	JSP/CANN	0.164	0.177	100
44 Caliber	4454	0.429	240	JSP/CANN	0.169	0.186	100
45 Caliber	4481	0.452	260	JHP/CANN	0.183	0.183	50
45 Caliber	4485	0.451	300	JSP/CANN	0.199	0.211	50
50 Action Express	4495	0.500	325	JHP	0.169	0.186	50

LEAD HANDGUN BULLETS

Caliber	Part No.	Diameter	Weight	Bullet Type	BC	SD	Box Count
32 S&W Long	4600	0.314	98	Hollow Base WC	0.044	0.142	1000
9mm	4602	0.356	125	RN	0.155	0.141	500
38 Caliber	4624	0.358	158	SWC	0.123	0.176	500
38 Caliber	4628	0.358	158	SWC HP	0.121	0.176	500
38 Caliber	4648	0.358	158	RN	0.170	0.176	500
45 Auto	4678	0.452	200	SWC	0.170	0.176	500
45 Auto	4691	0.452	230	RN	0.160	0.161	500

ABBREVIATION KEY: TMJ = Total Metal Jacket, RN = Round Nose, FN = Flat Nose, SWC = Semi-Wadcutter, JHP = Jacketed Hollow Point, JSP = Jacketed Soft Point, WC = Wadcutter, HP = Hollow Point, CANN = Cannulure

**BUY
DIRECT**

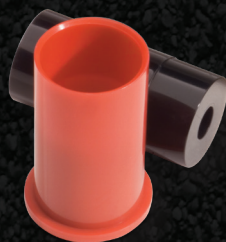
Now available for
purchase online at
speer-ammo.com

SPECIALTY AND ACCESSORIES

Shooters' needs are as varied as shooters themselves. At Speer®, we recognize this with specialty products that fulfill these unique facets of shooting, and our Handloading Manual serves as the ultimate resource for handloading recipes and information.

PLASTIC TRAINING BULLETS & CASES

PRACTICAL PRACTICE



For informal target practice in places with a minimal backstop, finding the proper ammo isn't always easy. Speer Plastic Training Bullets & Cases make the perfect practice load. Reusable molded plastic cases and bullets powered by CCI® large pistol primers provide an accurate and inexpensive alternative. They are designed for 25-foot shooting.

Simply prime the case, insert the plastic wadcutter bullet and you're ready to go. Primer power alone propels the lightweight bullet 300-400 fps. You can stop these in a simple bullet trap made from carpet scraps and cardboard. Bullets can be reused several times.

Bullets and cases are sold separately, so you can replace lost or damaged bullets. They are packed 50 bullets or cases to the box. The 45 Auto bullet is designed to readily load in a standard reloadable brass case with a modified flash hole.

This is not loaded ammunition. Primers are not included. Recommended for handguns only. Use only in areas with adequate ventilation. Do not use any propellant powder when assembling these cartridges.

PLASTIC BULLETS & CASES

Product	Bullet Part #	Case Part #	Box Count
38 Cal	8510	8515	50
44 Cal	8520	8525	50
45 Cal*	8530	See Notes	50

Note: 45 cal. bullet is used with standard brass case. * For 45 Auto only.

EMPTY SHOT CAPSULES

PEST LOADS FOR HANDGUNS



Create custom cartridges with our Empty Shot Capsules. Simply fill them with size 8 or 9 shot (not included), snap in the base wad, and load like a conventional bullet. Shot Capsules include base wads and are available in 44 caliber and 45 Colt (25 count), and 38/357 (50 count). Loading data is available in the Speer Handloading Manual.

Intended for short-range pest and varmint control. Not recommended for self-defense. Not for use in firearms with ported recoil compensators.

EMPTY SHOT CAPSULES

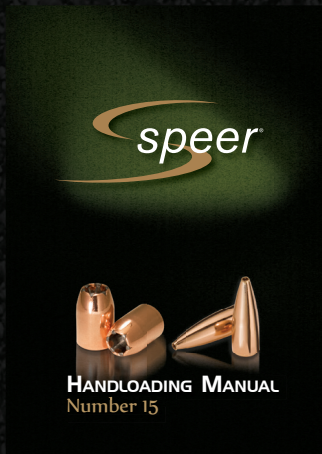
Product	Part #	Box Count
38/357 Cal.	8780	50
44 Cal	8782	25
45 Colt	8785	25

BUY DIRECT
 Now available for purchase online at speer-ammo.com



SPEER HANDLOADING MANUAL #15

YOUR GUIDE TO PERFECT HANDLOADS



Decades of reloading knowledge and the latest recipes and techniques have been distilled into a single source: The Speer Handloading Manual No. 15. This new edition is Speer's largest volume yet, featuring updated recipes with the latest propellants for more than 120 legacy cartridges, as well as data for 13 new cartridges, including 204 Ruger, 6.5 Creedmoor and 300 Blackout. The all-encompassing manual also provides recipes for loading new Gold Dot® rifle component bullets, and articles by professional shooters Julie Golob and Jim Gilliland.

Part # SRM15 — Handloading Manual

LEAD ROUND BALLS

TRADITION MEETS PRECISION



Speer offers a variety of lead balls for the traditional shooting enthusiast. Great care is taken to ensure smoothness and shape uniformity for better accuracy. Lead balls are packaged in our unique black plastic boxes for added protection and convenience.

LEAD ROUND BALLS			
Ball Diameter (inches)	Part #	Approximate Weight (Grains)*	Box Count
0.350	5110	64	100
0.375	5113	79	100
0.433	5127	121	100
0.440	5129	127	100
0.445	5131	132	100
0.451	5133	137	100
0.454	5135	140	100
0.457	5137	143	100
0.490	5139	176	100
0.495	5140	181	100
0.530	5142	223	100
0.535	5150	229	100
0.570	5180	277	50

Use the ball diameter recommended by your firearm's manufacturer. *Round balls are manufactured to diameter; weights are provided for reference only.



VISTA

— **OUTDOOR** —

BRINGING THE WORLD OUTSIDE™

CONNECT WITH US. WE SHARE YOUR PASSION FOR ALL THINGS SHOOTING.